

# Monthly Report on Short-term Transactions of Electricity in India

March 2024



Economics Division  
Central Electricity Regulatory Commission  
6th, 7th & 8th Floors, Tower B, World Trade Centre  
Nauroji Nagar, New Delhi- 110029



# Contents

S.No.	Contents	Page No
	Contents	I
	List of Tables	Ii
	List of Figures	Iii
	Abbreviations	Iv
1	Introduction	1
2	Volume of Short-term Transactions of Electricity and DSM	1
3	Price of Short-term Transactions of Electricity and DSM Charges	3
3.1	<i>Price of electricity transacted through Traders</i>	3
3.2	<i>Price of electricity transacted through Power Exchanges</i>	4
3.3	<i>DSM Charges</i>	4
4	Trading Margin	4
5	Volume of Short-term Transactions of Electricity (Regional Entity-wise)	5
6	Congestion on Inter-State Transmission Corridor for Day-Ahead Market and Real-Time Market on Power Exchanges	6
7	Volume and Price of Renewable Energy Certificates (RECs)	7
8	Inferences	8

<b>S.No.</b>	<b>List of Tables</b>	<b>Page No.</b>
Table-1	Volume of Short-term Transactions of Electricity and DSM (All India)	10
Table-2	Percentage Share of Electricity Transacted by Trading Licensees	12
Table-3	Price of Electricity Transacted through Traders	13
Table-4	Price of Electricity Transacted through Traders (Time-wise)	13
Table-5	Price of Electricity Transacted in Day Ahead Market	13
Table-6	Price of Electricity Transacted in Green Day Ahead Market	13
Table-7	Price of Electricity Transacted in High Price Day Ahead Market	13
Table-8	Price of Electricity Transacted in Real Time Market	13
Table-9	Volume and Price of Electricity in Term Ahead Market of IEX	13
Table-10	Volume and Price of Electricity in Term Ahead Market of PXIL	13
Table-11	Volume and Price of Electricity in Term Ahead Market of HPX	14
Table-12	Volume and Price of Electricity in Green Term Ahead Market of IEX	14
Table-13	Volume and Price of Electricity in Green Term Ahead Market of PXIL	14
Table-14	Volume and Price of Electricity in Green Term Ahead Market of HPX	14
Table-15	Volume and Price of Electricity in High Price Term Ahead Market of IEX	14
Table-16	Volume and Price of Electricity in High Price Term Ahead Market of PXIL	14
Table-17	Volume and Price of Electricity in High Price Term Ahead Market of HPX	14
Table-18	Volume of Electricity Sold in Day Ahead Market through Power Exchanges	16
Table-19	Volume of Electricity Purchased in Day Ahead Market through Power Exchanges	18
Table-20	Volume of Electricity Sold in Green Day Ahead Market through Power Exchanges	19
Table-21	Volume of Electricity Purchased in Green Day Ahead Market through Power Exchanges	20
Table-22	Volume of Electricity Sold in Real Time Market through Power Exchanges	21
Table-23	Volume of Electricity Purchased in Real Time Market through Power Exchanges	23
Table-24	Total Volume of Net Transactions through Power Exchanges (Regional Entity-wise)	24
Table-25	Details of Congestion in Power Exchanges	26
Table-26	Volume of Transactions through Power Exchanges (Day-wise)	27
Table-27(a)	Price of Day Ahead Transactions of Electricity (Day-Wise)	28
Table-27(b)	Price of Green Day Ahead Transactions of Electricity (Day-Wise)	29
Table-27(c)	Price of Real Time Transactions of Electricity (Day-Wise)	30
Table-27(d)	Price of High Price Day Ahead Transactions of Electricity (Day-Wise)	31
Table-28	Volume of Transactions through Power Exchanges (Regional Entity-wise)	32
Table-29	Volume and Charges under DSM (Day wise)	35
Table-30	Volume of Electricity Under drawal/ Over Injection (Exported) under DSM	36
Table-31	Volume of Electricity Over drawal/ Under Injection (Imported) under DSM	40
Table-32	Volume and Price of Renewable Energy Certificates (RECs) Transacted through Power Exchanges and through Traders (Bilateral)	44
Table-33(a)	Volume and Price of Cross Border Trade through Day Ahead Market at IEX	44
Table-33(b)	Volume and Price of Cross Border Trade through Real Time Market at IEX	44

<b>S. No.</b>	<b>List of Figures</b>	<b>Page No.</b>
Figure-1	Volume of various kinds of Electricity Transactions in Total Electricity Generation	10
Figure-2	Volume of Short-term Transactions of Electricity and DSM Volume	10
Figure-3	Volume transacted in different markets segments on Power Exchanges	11
Figure-4	Volume of transactions on Power Exchange and DSM Volume (Day-wise)	11
Figure-5	Percentage Share of Electricity Transacted by Trading Licensees	12
Figure-6	Weighted Average Price of Short-term Transactions of Electricity	15
Figure-7	Weighted Average Price of Short-term Transactions of Electricity (Day-wise)	15

## Abbreviations

<b>Abbreviation</b>	<b>Expanded Version</b>
ABSP_ANTP	Acme Bhiwadi Solar Power Private Limited, Anantpur
ACBIL	ACB (India) Limited
ACP	Area Clearing Price
ACV	Area Clearing Volume
ACME_SLR	ACME Solar Power Project
ACME_RUMS	Acme Rewa Ultra Mega Solar Project
ADANI_4RE	Adani Renewable Energy Holding Four Limited
ADANI GREEN	Adani Green Energy Limited
ADANIHB_SLR	Adani Hybrid Energy Jaisalmer One Limited (Solar)
ADANI_SLR 4	Adani Solar Energy Four Private Limited
ADANIHB_WIND	Adani Hybrid Energy Jaisalmer One Limited (Wind)
ADEPT	Adept Renewable Technologies Private Limited
ADY1_PVGD	Adyah Solar Energy Pvt Ltd., Block 1 Pavagada Solar Park
ADY2_PVGD	Adyah Solar Energy Pvt Ltd., Block 2 Pavagada Solar Park
ADY3_PVGD	Adyah Solar Energy Pvt Ltd., Block 3 Pavagada Solar Park
ADY6_PVGD	Adyah Solar Energy Pvt Ltd., Block 6 Pavagada Solar Park
ADY10_PVGD	Adyah Solar Energy Pvt Ltd., Block 10 Pavagada Solar Park
ADY13_PVGD	Adyah Solar Energy Pvt Ltd., Block 13 Pavagada Solar Park
AGEMPL BHUJ	Adani Green Energy (MP) Ltd.,Bhuj
AHEJOL_S_FTG2	Adani Hybrid Energy Jaisalmer One Limited (SOLAR)
AHEJOL_W_FTG2	Adani Hybrid Energy Jaisalmer One Limited (WIND)
AHEJ2L_SOLAR	Adani Hybrid Energy Jaisalmer Two Limited (Solar)
AHEJ3L_SOLAR	Adani Hybrid Energy Jaisalmer Three Limited (Solar)
AHEJ4L_SOLAR	Adani Hybrid Energy Jaisalmer Four Limited-Hybrid Solar
AHEJ4L_WIND	Adani Hybrid Energy Jaisalmer Four Limited-Hybrid Wind
AHSP_ANTP	Acme Hisar Solar Power Private Limited,Anantpur
AKS_PVGD	ACME Kurukshetra Solar Energy Pvt. Ltd
AKSP_ANTP	Acme Karnal Solar Power Private Limited,Anantpur
ALFANAR_BHUJ	Alfanar Group Wind Project, Bhuj, Gujarat
ALTRA XERGI	Altra Xergi Power Private Limited
AMP_GREEN6	Amp Energy Green Six Private Limited
AMPLUS_AGES	Amplus Ages Private Limited
AMPS Hazira	Arcelor Mittal Nippon Steel, Hazira
APTEL	Appellate Tribunal for Electricity
ARERJL_SLR	Adani Renewable Energy Park Rajasthan Ltd.
ARINSUM_RUMS	Solenergi RewaUltraMega Solar Project
ARS_PVGD	ACME REWARI Solar Power Pvt Ltd.
ARTPP	Adani Power Limited - Raipur TPP
ASEJTL_SLR	Adani Solar Energy Jodhpur Two Ltd.
AVAADA1_PVGD	Avaada Solar Energy Private Ltd., Pavagada Project 1
AVAADA2_PVGD	Avaada Solar Energy Private Ltd., Pavagada Project 2
AVADARJHN_SLR	Avaada Rjhn Private Limited_Solar
AYANA_NPKUNTA	Ayana Power, NP Kunta
AZURE_ANTP	Azure Power,Anantpur
AZURE_PVGD	Azure Power,Pavagada
AZURE_SLR	Azure Power Solar Power Project
AZURE34_SLR	Azure Power 34 Pvt. Ltd. Solar Power Project
AZURE43_SLR	Azure Power Forty Three Private Limited
BALCO	Bharat Aluminum Company Limited
BARC	Bhabha Atomic Research Centre
BASOCHHU HEP	Basochhu Hydropower Plant Bhutan
BBMB	Bhakra Beas Management Board

BETAM_TCN	Betam Wind Energy Private Limited, Tuticorin
BHADRAVATHI HVDC	Bhadravathi High Voltage Direct Current Link
BRBCL	Bhartiya Rail Bijlee Company Limited
CEA	Central Electricity Authority
CERC	Central Electricity Regulatory Commission
CGPL	Coastal Gujarat Power Limited
CHUKHA HEP	Chhukha Hydroelectric Project, Bhutan
CHUZACHEN HEP	Chuzachen Hydro Electric Power Project
CLEAN_SLR	Clean Solar Power Pvt. Ltd
CLEANSPL_SLR	Clean Solar Jodhpur Pvt Ltd
COASTGEN	Coastal Energen Private Limited
DAGACHU	Dagachhu Hydro Power Corporation
DAM	Day Ahead Market
DEVKOOT_SLR	Devkoot Solar Power Plant, NTPC Green Energy Ltd.
DCPP	Donga Mahua Captive Power Plant
DD&DNH	Daman and Diu & Dadar Nagar Haveli
DGEN MEGA POWER	DGEN Mega Power Project
DGPCL Bhutan	Druk Green Power Corporation Ltd., Bhutan
DHARIWAL POWER	Dhariwal Power Station
DIKCHU HEP	Dikchu Hydro-electric Project, Sikkim
DOYANG HEP	DoyangHydro Electric Project
DSM	Deviation Settlement Mechanism
DVC	Damodar Valley Corporation
EDEN_SLR	Eden RE Cite Private limited
EMCO	EMCO Energy Limited
ESPL_RADHANESDA	Electro Solaire Private Limited, Radhanesda
ESSAR POWER	Essar Power Limited
FORTUM1_PVGD	Fortum Finnsurya Energy Private Ltd, Pavagada Project 1
FORTUM2_PVGD	Fortum Finnsurya Energy Private Ltd, Pavagada Project 2
FRV_ANTP	Fotowatio Renewable Ventures, Anantapur
FRV_NPK	Fotowatio Renewable Ventures, NP Kunta
GIPCL_RADHANESDA	Gujarat Industries Power Company Ltd, Radhanesda
GIWEL_BHUJ	Green infra wind energy Limited, Bhuj
GIWEL_TCN	Green Infra Wind Energy Limited, Tuticorin
GMR CHHATTISGARH	GMR Chhattisgarh Energy Limited
GMR KAMALANGA	GMR Kamalanga Energy Ltd.
G-DAM	Green Day Ahead Market
GRIAN	Grian Energy Private Limited
GSECL P-II	GSECL Raghnesda Solar Park (Phase-II)
G-TAM	Green Term Ahead Market
HPX	Hindustan Power Exchange Limited
HP-DAM	High Price Day Ahead Market
HP-TAM	High Price Term Ahead Market
HVDC ALPD	Alipurduar High Voltage Direct Current Link
HVDC CHAMPA	Champa-Kurukshetra High Voltage Direct Current Link
HVDC PUS	Pasauli High Voltage Direct Current Link
HVDC RAIGARH	Raigarh-Pugalur High Voltage Direct Current Link
IBEUL	Ind Bharat Energy Utkal Limited
IEX	Indian Energy Exchange Limited
IGSTPS	Indira Gandhi Super Thermal Power Station Jhajjar
IL&FS	Infrastructure Leasing & Financial Services Limited
INOX_BHUJ	INOX Wind Limited, Bhuj, Gujarat
J&K	Jammu & Kashmir
JAYPEE NIGRIE	Jaypee Nigrie Super Thermal Power Project

JHABUA POWER MP	Jhabua Thermal Power Project
JINDAL POWER	Jindal Power Limited
JINDAL STAGE-II	Jindal Power Ltd Stage II
JITPL	Jindal India Thermal Power Ltd.
JORETHANG	Jorethang Loop Hydroelectric Power Project
JSW_RENEW_2	JSW Renew Energy Two Limited
KAPP 3&4	Kakrapar Atomic Power Station Unit 3 & 4
KARCHAM WANGTOO	Karcham Wangtoo H.E. Project
KBUNL	Kanti Bijlee Utpadan Nigam Limited
KHURJA STPP	Khurja Super Thermal Power Plant
KORBA WEST POWER	Korba West Power Company Limited
KOTESHWAR	Koteshwar Hydro Power project
KREDL_PVGD	Karnataka Renewable Energy Development Ltd,Pavagada
KSK MAHANADI	KSK Mahanadi Power Ltd
KSMPL_SLR	Kilaj Solar (Maharashtra) Private Limited
KURICHU HEP	Kurichhu Hydro-electric Power Station, Bhutan
LANKO_AMK	LancoAmarkantak Power Private Limited
LANKO BUDHIL	LancoBudhil Hydro Power Private Limited
LANKOKONDAPALLY	Lanco Kondapally Power Private Limited
LOKTAK	Loktak Power Project
MAHINDRA_RUMS	Mahindra Rewa Ultra Mega Solar Project
MAHOBASLR	Mahoba Solar Power Project
MALANA	Malana Hydroelectric Plant
MANGDECHU HEP	Mangdechhu Hydroelectric Project, Mangdechhu River, Bhutan
Maruti Coal	Maruti Clean Coal and Power Limited
MB POWER	MB Power Ltd
MEENAKSHI	Meenakshi Energy Private Limited
MRPL	Mahindra Renewables Private Limited
MSEPL	Masaya Solar Energy Private Limited
MSRPL	Mega Solis Renewables Pvt. Ltd.
MTPS	TATA Power Mundra Thermal Power Station
MTPS II	Muzaffarpur Thermal Power Station – Stage II
MYTRAH_TCN	Mytrah Energy (India) Private Limited,Tuticorin
MU	Million Units
NAPP	Narora Atomic Power Plant
NCR ALLAHABAD	North Central Railway, Allahabad
NEEPCO	North Eastern Electric Power Corporation Limited
NEP	Nepal
NFL	National Fertilisers Limited
NHPC STATIONS	National Hydro Electric Power Corporation Ltd. Stations
NJPC	Nathpa Jhakri Hydroelectric Power Station
NLC	Neyveli Lignite Corporation Limited
NLDC	National Load Dispatch Centre
NOKHRA_STPP	Nokhra Solar Power Plant, NTPC Green Energy Ltd.
NPGC	Nabinagar Power Generating Company (Pvt.) Limited
NREL_DAYAPAR (W)	NREL-Dayapar Wind
NSPCL	NTPC - SAIL Power Company Private Limited
NTECLVallur	NTPC Tamil Nadu Energy Company Limited Vallur
NTPC_ANTP	NTPC Anantapur
NTPC STATIONS	National Thermal Power Corporation Ltd. Stations
NTPL	NLC Tamil Nadu Power Limited
NVVN	NTPC Vidyut Vyapar Nigam Limited
OCF	Order Carry Forward
ONEVOLT	Onevolt Energy Private Limited

ONGC Platana	ONGC Tripura Power Company
OPGC	Odisha Power Generation Corporation
ORANGE_TCN	Orange Renewable Power Pvt. Ltd, Tuticorin
OSTRO	Ostro Energy Private Limited
OTC	Over The Counter
PARAM_PVGD	Parampujya Solar Energy Private Ltd
PARE HEP	Pare hydroelectric project, Arunachal Pradesh
PXIL	Power Exchange India Limited
RAMPUR HEP	Rampur Hydro Electric Power Project
RANGIT HEP	Rangit Hydroelectric power project
RANGANADI HEP	Ranganadi Hydro Electric Power Project, Arunachal Pradesh
RAP-B	Rajasthan Atomic Power Plant-B
RAP-C	Rajasthan Atomic Power Plant-C
RAPP 7&8	Rajasthan Atomic Project 7&8
REC	Renewable Energy Certificate
REGL	Raigarh Energy Generation Limited
RENEW_BHACHAU	ReNew Power Limited, Bhachau
RENEW_BHUJ	ReNew Power Limited, Bhuj
RENEW_PVGD	ReNew Wind Energy (TN2) Private Limited
RENEW_ROSHNI FATEHGARH	Renew Surya Roshni Private Limited-Fatehgarh-III PS
RENEW_SAAAYAN	Renew Surya Aayan Private Limited
RENEW_SLR_BKN	Renew Solar Bikaner
RENEW_SOJAS	Renew Surya Ojas Private Limited-Wind
RENEW_SPRATAP	Renew Surya Pratap Private Limited
RENEW_SR_SLR	Renew Surya Ravi Private Limited (Solar)
RENEW_SVIHAAN	Renew Surya Vihaan Private Limited
RENEW_ROSHNI	Renew Surya Roshni Private Limited Koppal PS
RENEWJH_SLR	Renew Solar Energy (Jharkhand Three) Private Limited
RENEWURJA_SLR	ReNew Solar Urja Private Limited
RGPPL_IR	Ratnagiri Gas and Power Private Ltd., supply to Indian Railways
RGPPL_OTHER	Ratnagiri Gas and Power Private Limited
RISING_SLR	Rising Sun Energy Pvt. Ltd.
RLDC	Regional Load Dispatch Centre
RONGNICHU HEP	Rongnichu Hydro Electric Power Project
RPREL	Raipur Energen Limited
RSTPS_FSPP	NTPC Ramagundam STPS- Floating Solar PV Project
RTC	Round The Clock
RTM	Real Time Market
SasanUMPP	Sasan Ultra Mega Power Project
SB_SLR	Soft Bank Solar
SB6_POKARAN	SB Energy Six Private Limited, Pokaran
SBG CLEANTECH_SLR	SBG Cleantech Ltd
SBG_NPK	SB Energy Solar Private Limited, NP Kunta
SBG_PVGD	SB Energy Solar Private Limited, Pavagada
SBSR_SLR	SBSR Power Cleantech Eleven Private Limited
SEMBCORP	Sembcorp Gayatri Power Ltd
SIMHAPURI	Simhapuri Energy Private Limited
SKS Power	SKS Power Generation Chhattisgarh Limited
SESPL	Srijan Energy Systems Pvt. Ltd.
SINGOLI BHATWARI HEP	Singoli-Bhatwari Hydroelectric Project, Uttarakhand
SKRPL	Sitac Kabini Renewables Pvt. Ltd.
SPRNG_NPKUNTA	Spring Energy, NP Kunta
SPRING_PUGALUR	Spring Solar Power Private Limited, Pugalur
SUL	Sikkim Urja Limited



TALA HEP	Tala Hydroelectric Project, Bhutan
TASHIDENG HEP	Tashiding Hydro Electric Project, Sikkim
TATA_ANTP	TATA Power Anantapur
TATA_PVGD	Tata Power Renewable Energy Ltd
TATA_SLR	Tata Solar
TAM	Term Ahead Market
TEESTA STG3	Teesta Stage 3 Hydro Power Project
TEHRI	Tehri Hydro Electric Power Project
TESPL	Transition Energy Services Private Limited
THAR1_SLR	Thar Surya Ravi One Pvt Ltd
THERMAL POWERTECH	Thermal Powertech Corporation India Limited
TPREL_RADHANESDA	Tata Power Renewable Energy Limited, Radhanesda
TPSL	TP Saurya Limited
VINDHYACHAL HVDC	Vindhyachal High Voltage Direct Current Link
WA	Weighted Average
YARROW_PVGD	Yarrow Infra Structure Private Ltd

## 1. Introduction

1.1. A well-functioning electricity market requires an effective market monitoring process. The monthly report on short-term transactions of electricity, published by CERC since 2008 as part of its market monitoring process, provides a snapshot of key aspects of short-term transactions of electricity in India. Here, “short-term transactions of electricity” refers to the contracts of less than one year period for electricity transacted (inter-State) - through Trading Licensees, directly by the Distribution Licensees and on Power Exchanges (Indian Energy Exchange Ltd (IEX), Power Exchange India Ltd (PXIL) and Hindustan Power Exchange Ltd (HPX)). “DSM Volume” includes the volume recorded under Deviation Settlement Mechanism. The main objectives of the report are: (i) to analyse the volume and price of the short-term transactions of electricity; (ii) to assess the competition among the market players; (iii) to analyse the effect of congestion on the volume of electricity transacted through power exchanges; (iv) to provide information on volume and price of Renewable Energy Certificates (RECs) transacted through power exchanges; and (v) to disseminate all other relevant market information. The analysis of short-term transactions of electricity and DSM volume during the month of **March 2024** is presented in the following sections.

## 2. Volume of Short-term Transactions of Electricity and DSM

2.1. During March 2024, total electricity generation, excluding generation from renewable and captive power plants in India, was 129449.35 MU (Table-1). Of the total electricity generation, 15.17% was transacted through short-term and DSM, comprising of 7.31% through bilateral<sup>1</sup> (through Traders and Term-Ahead contracts on power exchanges, and directly between distribution companies), followed by 6.07% through power exchanges {Day Ahead Market (DAM) (including G-DAM) and Real Time Market (RTM)}, and 1.79% through DSM (Table-1 & Figure-1).

2.2. Of the total short-term transactions and DSM volume (19641.74 MU), 48.18% was transacted through bilateral (i.e. through Traders, Term-Ahead contracts on power exchanges and directly between companies), followed by 40.00% through power exchanges {DAM

---

<sup>1</sup> With change in the regime on implementation of GNA Regulations from 1<sup>st</sup> October 2023, the volume reported here is not strictly comparable to the volumes in previous months. Some discrepancies were identified by CERC in the data provided by NLDC which prompted further validation. The volume herein is computed after verification with the volumes reported by the Trading Licensees and the Power Exchanges, and are subject to further revision. The Commission has directed NLDC, vide letter dated 05.01.2024, to make necessary provisions to differentiate the type of transactions under GNA and T-GNA at the earliest. In the interim, some of the tables in the monthly reports have been temporarily discontinued.

(including G-DAM & HP-DAM) and RTM}, and 11.83% through DSM (Table-1 & Figure-2). The daily volume of power exchange transactions is shown in Table-26. Figure-4 shows the daily volume trend for power exchange transactions and DSM volume.

2.3. Of the total volume of electricity transacted through power exchanges, 46.62% of the volume was transacted in DAM (including G-DAM & HP-DAM), followed by 27.77% in Term Ahead Market (TAM) (including G-TAM & HP-TAM) and 25.61% in RTM (Figure-3).

2.4. The share of electricity traded by each trading licensee is given in Table-2 & Figure-5. The volume of electricity transacted by the trading licensees includes bilateral transactions and transactions undertaken through power exchanges. There were 60 trading licensees as of March 2024. Of which, 35 trading licensees were engaged in short-term trading. The top 5 trading licensees, namely PTC India Ltd., NTPC Vidyut Vyapar Nigam Ltd., Adani Enterprises Ltd., Manikaran Power Ltd. and Tata Power Trading Company (P) Ltd., had a share of 81.33% in the total volume of electricity traded by all the licensees.

2.5. Herfindahl-Hirschman Index (HHI), a commonly accepted index to calculate market concentration, has been used to measure competition among trading licensees. An increase in the HHI generally indicates a decrease in competition and an increase in market concentration, and vice versa. The HHI below 0.15 indicates non-concentration, HHI between 0.15 and 0.25 indicates moderate concentration, and HHI above 0.25 indicates high concentration. The HHI has been computed based on the volume of electricity traded (inter-State & intra-State) by inter-State trading licensees, and it was 0.1721 for the month of March 2024, which indicates moderate concentration of market power (Table-2).

2.6. The volume of electricity transacted in the DAM of IEX and PXIL was 4658.59 MU and 0.04 MU, respectively, while no electricity was transacted in the DAM of HPX. The volume of total buy bids and sell bids was 7457.01 MU and 9715.23 MU, respectively in IEX, while the same was 25.59 MU and 92.93 MU, respectively in PXIL. No buy bids were received in DAM of HPX, while the volume of total sell bids was 65.52 MU.

2.7. Of the total volume of electricity transacted in the DAM of IEX, the volume purchased by the neighbouring countries of India was 583.22 MU, while no volume was sold by the neighbouring countries, under the Cross Border Trade of electricity through power

exchange (Table-33(a)). No Cross Border transaction of electricity was undertaken through PXIL and HPX.

2.8. The volume of electricity transacted in the G-DAM of IEX was 411.49 MU, while no electricity was transacted in the G-DAM of PXIL and HPX. The volume of total buy bids and sell bids was 1577.63 MU and 738.20 MU, respectively, in IEX. No bids were received in PXIL and HPX.

2.9. No volume was traded in the HP-DAM of IEX, PXIL or HPX. The volume of total sell bids was 2541.05 MU, while no buy bids were received in IEX. No bids were received in PXIL and HPX.

2.10. The volume of electricity transacted in the RTM of IEX, PXIL and HPX was 2785.62 MU, 0.10 MU and 0.11 MU, respectively. The volume of total buy bids and sell bids was 3850.00 MU and 5817.36 MU, respectively in IEX, 0.15 MU and 10.67 MU, respectively in PXIL, while the same was 0.20 MU and 4.91 MU, respectively in HPX. The variation in the volume of buy bids and sell bids placed through power exchanges shows variation in the demand and supply position.

2.11. Of the total volume of electricity transacted in the RTM of IEX, the volume sold by the neighbouring countries of India was 5.90 MU, while the volume purchased was 21.85 MU, under the Cross Border Trade of electricity through power exchange (Table-33(b)). No Cross Border transaction of electricity was undertaken through PXIL and HPX.

2.12. The volume of electricity transacted in the TAM of IEX, PXIL and HPX was 806.45 MU, 1046.25 MU and 1049.35 MU, respectively (Table-9, Table-10 & Table-11). The volume of electricity transacted in the Green Term Ahead Market (G-TAM) of IEX, PXIL and HPX was 16.19 MU, 5.18 MU and 97.14 MU, respectively (Table-12, Table-13 & Table-14).

2.13. No volume was traded in the HP-TAM of IEX, PXIL and HPX (Table-15, Table-16 & Table-17).

### **3. Price of Short-term Transactions of Electricity and DSM charges**

3.1. *Price of electricity transacted through Traders:* The minimum, maximum and weighted average sale prices for the electricity transacted through traders were ₹2.31/kWh,

₹10.00/kWh and ₹8.07/kWh, respectively (Table-3). The weighted average sale prices were also computed for the electricity transacted during Round the Clock (RTC), Peak and Off-peak periods separately, and the sale prices were ₹8.04/kWh, ₹9.95/kWh and ₹7.35/kWh, respectively (Table-4).

3.2. **Price of electricity transacted through Power Exchanges:** The minimum, maximum and weighted average prices for the electricity transacted in the DAM of IEX were ₹0.50/kWh, ₹10.00/kWh and ₹3.96/kWh, respectively. These prices in the DAM of PXIL were ₹5.78/kWh, ₹5.78/kWh and ₹5.78/kWh respectively (Table-5). The minimum, maximum and weighted average prices for the electricity transacted in the G-DAM of IEX were ₹1.00/kWh, ₹10.00/kWh and ₹3.81/kWh, respectively (Table-6). The minimum, maximum and weighted average prices for the electricity transacted in the RTM of IEX were ₹0.90/kWh, ₹10.00/kWh and ₹3.91/kWh, respectively. These prices in the RTM of PXIL were ₹10.00/kWh, ₹10.00/kWh and ₹10.00/kWh respectively. The minimum, maximum and weighted average prices for the electricity transacted in the RTM of HPX were ₹10.00/kWh, ₹10.00/kWh and ₹10.00/kWh, respectively (Table-8). The weighted average price of electricity transacted in the TAM of IEX, PXIL and HPX was ₹7.98/kWh, ₹7.94/kWh and ₹8.03/kWh, respectively (Table-9, Table-10 and Table-11). The weighted average price of electricity transacted in the G-TAM of IEX, PXIL and HPX was ₹5.28/kWh, ₹4.68/kWh and ₹3.85/kWh, respectively (Table-12, Table-13 and Table-14).). No electricity was transacted in DAM of HPX, G-DAM of PXIL & HPX, in HP-TAM and HP-DAM of all power exchanges.

3.3. **DSM Charges:** The minimum, maximum and average charge under DSM was ₹1.00/kWh, ₹10.00/kWh and ₹4.31/kWh, respectively (Table-29).

3.4. The comparison of weighted average prices of electricity transacted through trading licensees and power exchanges is shown in Figure-6. The daily prices of electricity transacted through various segments at power exchanges and their comparison are shown in Table-27(a), (b), (c) & (d) and Figure-7. The daily volume and charges under DSM are shown in Table-29.

## 4. Trading Margin

4.1. As per the CERC (Procedure, Terms and Conditions for grant of trading licence and other related matters) Regulations 2020, the trading licensees are allowed to charge a trading margin of not less than 0 paise/kWh and upto 7 paise/kWh. The weighted average trading

margin charged by the trading licensees for bilateral transactions during the month was ₹0.036/kWh.

## **5. Volume of Short-term Transactions of Electricity (Regional Entity<sup>2</sup>-Wise)**

5.1. Of the total DAM transactions at power exchanges, the top 5 regional entities/states sold 37.13% of the volume, and these were Uttar Pradesh, Adani Power Limited - Raipur TPP, Jindal Power Stage II, Chhattisgarh and Essar Power (Table-18). The top 5 regional entities/states purchased 54.38% of the volume, and these were Gujarat, Telangana, Druk Green Power Corporation Ltd.- Bhutan, Punjab and Uttarakhand (Table-19).

5.2. Of the total G-DAM transactions at power exchanges, the top 5 regional entities/states sold 51.44% of the volume, and these were Adani Renewable Energy Holding Four Ltd., Andhra Pradesh, Adani Solar Energy Jodhpur Two Ltd., Adani Wind Energy and Madhya Pradesh (Table-20). The top 5 regional entities/states purchased 59.13% of the volume, and these were Arcelor Mittal Nippon Steel Hazira, Tamil Nadu, Maharashtra, Punjab, and Damodar Valley Corporation (Table-21).

5.3. No volume was traded in HP-DAM of all three power exchanges.

5.4. Of the total RTM transactions at power exchanges, the top 5 regional entities/states sold 47.24% of the volume, and these were Madhya Pradesh, Bihar, Uttar Pradesh, Odisha, and Chhattisgarh (Table-22). The top 5 regional entities/states purchased 49.98% of the volume, and these were Punjab, Telangana, Rajasthan, Uttar Pradesh, and Kerala (Table-23).

5.5. The total volume of net transactions through power exchanges (Regional entity-wise), is shown in Table-24 & 28. The top 5 electricity selling regional entities/states of power exchange transactions were Madhya Pradesh, Bihar, Uttar Pradesh, Adani Power Limited - Raipur TPP and Chhattisgarh. The top 5 electricity purchasing regional entities/states of power exchange transactions were Gujarat, Telangana, Punjab, Tamil Nadu and Druk Green Power Corporation Ltd.- Bhutan.

5.6. Of the total under-drawal/ over-injection volume under DSM in March 2024, the top 5 regional entities/states accounted for 21.95% of the volume, and these were NTPC Stations

---

<sup>2</sup> In case of a State, the entities which are "selling" also include generators connected to State Grid and the entities which are "buying" also include open access consumers.

(Western Region), Madhya Pradesh, Rajasthan, NTPC Stations (Northern Region) and Gujarat (Table-30). The top 5 regional entities/states under DSM accounted for 22.38% of the total over-drawal/ under-injection volume, and these were NTPC Stations (Eastern Region), NTPC Stations (Northern Region), Adani Hybrid Energy Jaisalmer One Limited (Solar), NTPC Stations (Western Region) and NTPC Stations (Southern Region) (Table-31).

## **6. Congestion<sup>3</sup> on Inter-State Transmission Corridor for Day-Ahead Market and Real Time Market on Power Exchanges**

6.1. Power exchanges use a price discovery mechanism in which the aggregate demand and supply are matched to arrive at an unconstrained market price and volume. This process assumes that there is no congestion in the inter-State transmission system between different regions. However, in reality, the system operator (NLDC), in coordination with RLDCs, limits the flow (due to congestion) in the inter-State transmission system. In such a situation, power exchanges adopt a mechanism called “Market Splitting”<sup>4</sup>.

6.2. The volume of electricity that could not be cleared due to congestion & other reasons and could not be transacted through power exchanges is the difference between unconstrained cleared volume and actual cleared volume. During the month of March 2024, congestion was experienced in DAM, G-DAM and RTM of IEX.

6.3. The volume of electricity that could not be cleared due to congestion in DAM, G-DAM and RTM of IEX was 0.14%, 0.41% and 0.001% of the unconstrained cleared volume, respectively. In terms of time, congestion occurred was 7.96% in DAM, 3.36% in G-DAM and 0.10% in RTM of IEX during the month. (Table-25).

---

<sup>3</sup> “Congestion” means a situation where the demand for transmission capacity exceeds the available transfer capability

<sup>4</sup> “Market Splitting” is a mechanism adopted by Power Exchanges, where the market is split in the event of transmission congestion, into predetermined (by NLDC) bid areas or zones, which are cleared individually at their respective area prices such that the energy balance in every bid area is reached based upon the demand and supply in individual bid areas and using the available transmission corridor capacity between various bid areas simultaneously. As a result of this market splitting the price of electricity in the importing region, where demand for electricity is more than supply, becomes relatively higher than the price of electricity in the exporting region.

## **7. Volume and Price of Renewable Energy Certificates (RECs)**

7.1. The concept of Renewable Energy Certificates (RECs) seeks to address the mismatch between the availability of renewable energy and the requirement of the obligated entities to meet their renewable purchase obligation by purchasing green attributes of renewable energy remotely located in the form of RECs. The REC mechanism is a market-based instrument to promote renewable sources of energy and the development of the electricity market.

7.2. One REC is equivalent to 1 MWh electricity injected into the grid from renewable energy sources. The REC is exchanged only in the power exchanges approved by CERC within the band of a floor price and forbearance (ceiling) price as notified by CERC from time to time. The first REC trading was held on power exchanges in May 2011.

7.3. The categorisation of RECs has been dispensed with on introduction of the concept of multiplier under the CERC (Terms and Conditions for Renewable Energy Certificates for Renewable Energy Generation) Regulations, 2022, brought into effect from 05.12.2022. Accordingly, the power exchanges deactivated the Solar and Non-Solar REC contract for trading w.e.f. December 2022. A new contract named “REC” has been made available for trading on the power exchanges. Further, RECs can also be exchanged through trading licensees as per the REC Regulations 2022.

7.4. The details of REC transactions for the month of March 2024 are shown in Table-32. The market clearing volume of RECs transacted on IEX, PXIL and HPX was 1113755, 599057 and 80000, respectively. The weighted average market clearing price of these RECs was ₹290/MWh in IEX, ₹284/MWh in PXIL and ₹280/MWh in HPX.

7.5. The gap between the volume of buy and sell bids of RECs placed through power exchanges shows the variation in demand for the RECs. The ratio of buy bids to sell bids was 0.05, 0.04 and 0.02 in IEX, PXIL and HPX, respectively.

7.6. The volume of RECs transacted through Trading Licensees in March 2024 was 143757. The weighted average trade price for the RECs transacted through traders was ₹318/MWh.



## 8. Inferences:

- a) The percentage of short-term transactions of electricity and DSM volume to total electricity generation was 15.17%.
- b) Of the total short-term transactions and DSM volume (19641.74 MU), 48.18% was transacted through bilateral (i.e. through Traders, Term-Ahead contracts on power exchanges and directly between companies), followed by 40.00% through power exchanges {DAM (including G-DAM & HP-DAM) and RTM}, and 11.83% through DSM.
- c) Of the total volume of electricity transacted through power exchanges, 46.62% of the volume was transacted in DAM (including G-DAM & HP-DAM), followed by 27.77% in Term Ahead Market (TAM) (including G-TAM & HP-TAM) and 25.16% in RTM.
- d) The top 5 trading licensees had a share of 81.33% in the total volume traded by all the trading licensees.
- e) The Herfindahl Hirschman Index computed for the volume of electricity traded by trading licensees was 0.1721, indicating moderate concentration of market power.
- f) The weighted average sale price of electricity transacted through trading licensees was ₹8.07/kWh.
- g) The weighted average price of electricity transacted in DAM of IEX and PXIL was ₹3.96/kWh and ₹5.78/kWh, while no electricity was transacted in DAM of HPX. The weighted average price of electricity transacted in G-DAM of IEX was ₹3.81/kWh, while no electricity was transacted in G-DAM of PXIL and HPX. No volume was traded in HP-DAM. The weighted average price of electricity transacted in RTM of IEX, PXIL and HPX was ₹3.91/kWh, ₹10.00/kWh and ₹10.00/kWh, respectively.
- h) The weighted average price of electricity transacted in TAM of IEX, PXIL and HPX was ₹7.98/kWh, ₹7.94/kWh and ₹8.03/kWh, respectively. The weighted average price of electricity transacted in G-TAM of IEX, PXIL and HPX was ₹5.28/kWh, ₹4.68/kWh and ₹3.85/kWh, respectively. No volume was traded in HP-TAM of IEX, PXIL and HPX.

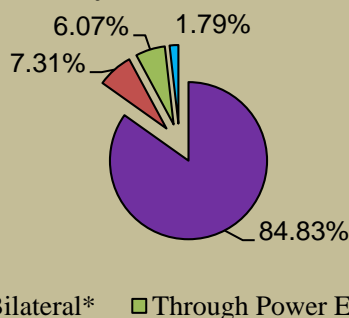
- i) The average charge under DSM was ₹4.31/kWh.
- j) The weighted average trading margin charged by the trading licensees for bilateral transactions was ₹0.036/kWh.
- k) The top 5 electricity selling regional entities/states of power exchange transactions were Madhya Pradesh, Bihar, Uttar Pradesh, Adani Power Limited - Raipur TPP and Chhattisgarh. The top 5 electricity purchasing regional entities/states of power exchange transactions were Gujarat, Telangana, Punjab, Tamil Nadu and Druk Green Power Corporation Ltd. - Bhutan.
- l) The top 5 under-drawing/ over-injecting regional entities/states under DSM were NTPC Stations (Western Region), Madhya Pradesh, Rajasthan, NTPC Stations (Northern Region) and Gujarat. The top 5 over-drawing/ under-injecting regional entities/states under DSM were NTPC Stations (Eastern Region), NTPC Stations (Northern Region), Adani Hybrid Energy Jaisalmer One Limited (Solar), NTPC Stations (Western Region) and NTPC Stations (Southern Region).
- m) During the month of March 2024, congestion was experienced in DAM, G-DAM and RTM of IEX. The volume of electricity that could not be cleared due to congestion in DAM, G-DAM and RTM of IEX was 0.14%, 0.41% and 0.001% of the unconstrained cleared volume, respectively.
- n) The market clearing volume of RECs transacted on IEX, PXIL and HPX was 1113755, 599057 and 80000, respectively. The weighted average market clearing price of these RECs was ₹290/MWh in IEX, ₹284/MWh in PXIL and ₹280/MWh in HPX. The volume of RECs transacted through Trading Licensees in March 2024 was 143757. The weighted average trade price for the RECs transacted through traders was ₹318/MWh.

\*\*\*

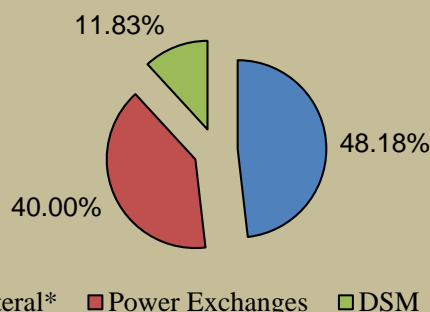
<b>Table-1: VOLUME OF SHORT-TERM TRANSACTIONS OF ELECTRICITY AND DSM (ALL INDIA), MARCH 2024</b>				
Sr. No	Transaction	Volume (MU)	% to short-term transactions and DSM Volume	% to Total Generation
A	<b>Short-term transactions</b>			
1	Bilateral*	<b>9462.87</b>	<b>48.18</b>	<b>7.31</b>
2	Through Power Exchanges	<b>7855.94</b>	<b>40.00</b>	<b>6.07</b>
	(i) IEX			
	(a) DAM	4658.59	23.72	3.60
	(b) RTM	2785.62	14.18	2.15
	(c) GDAM	411.49	2.09	0.32
	(d) HP-DAM	0.00	0.00	0.00
	(ii) PXIL			
	(a) DAM	0.04	0.0002	0.00003
	(b) RTM	0.10	0.001	0.0001
	(c) GDAM	0.00	0.00	0.00
	(d) HP-DAM	0.00	0.00	0.00
	(ii) HPX			
	(a) DAM	0.00	0.00	0.00
	(b) RTM	0.11	0.001	0.0001
	(c) GDAM	0.00	0.00	0.00
	(d) HP-DAM	0.00	0.00	0.00
B	<b>Through DSM</b>	<b>2322.93</b>	<b>11.83</b>	<b>1.79</b>
<b>Total Short-term transactions and DSM</b>		<b>19641.74</b>	<b>-</b>	<b>15.17</b>
<b>Total Generation</b>		<b>129449.35</b>	<b>-</b>	<b>-</b>

Source: NLDC

**Figure-1: Volume of various kinds of Electricity Transactions in Total Electricity Generation, March 2024**

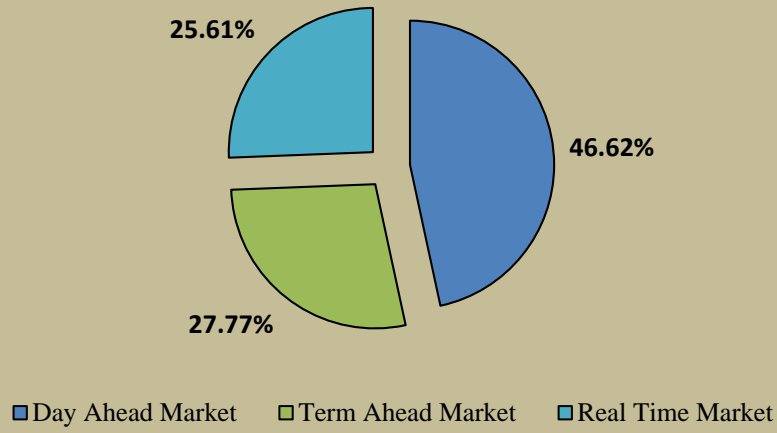


**Figure-2: Volume of Short-term Transactions of Electricity and DSM Volume, March 2024**

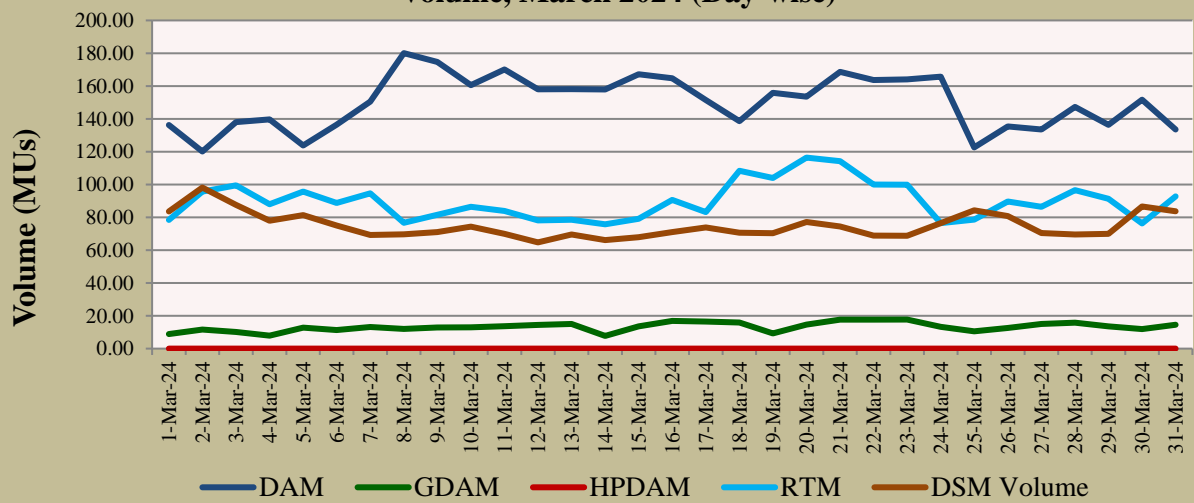


\* With change in the regime on implementation of GNA Regulations from 1<sup>st</sup> October 2023, the volume reported here is not strictly comparable to the volumes in previous months. Some discrepancies were identified by CERC in the data provided by NLDC which prompted further validation. The volume herein is computed after verification with the volumes reported by the Trading Licensees and the Power Exchanges, and are subject to further revision. The Commission has directed NLDC, vide letter dated 05.01.2024, to make necessary provisions to differentiate the type of transactions under GNA and T-GNA at the earliest.

**Figure-3: Volume transacted in different markets segments on Power Exchanges, March 2024**



**Figure-4: Volume of Transactions on Power Exchange and DSM Volume, March 2024 (Day-wise)**



<b>Table-2: PERCENTAGE SHARE OF ELECTRICITY TRANSACTED BY TRADING LICENSEES, MARCH 2024</b>		
<b>Sr. No</b>	<b>Name of the Trading Licensee</b>	<b>% Share in total Volume traded by Trading Licensees</b>
1	PTC India Ltd.	29.99
2	NTPC Vidyut Vyapar Nigam Ltd.	21.30
3	Adani Enterprises Ltd.	12.45
4	Manikaran Power Ltd.	10.69
5	Tata Power Trading Company (P) Ltd.	6.90
6	Arunachal Pradesh Power Corporation (P) Ltd	5.47
7	GMR Energy Trading Ltd.	2.63
8	JSW Power Trading Company Ltd	2.62
9	Ambitious Power Trading Company Ltd.	1.88
10	Gita Power & Infrastructure Private Limited	1.35
11	RPG Power Trading Company Ltd.	0.68
12	Instinct Infra & Power Ltd.	0.63
13	Shubheksha Advisors Pvt. Ltd.	0.51
14	Kreate Energy (I) Pvt. Ltd.	0.47
15	Instant Ventures Pvt. Ltd.	0.43
16	Kundan International Pvt. Ltd.	0.37
17	Saranyu Power Trading Private Limited	0.23
18	Shree Cement Ltd.	0.18
19	Adarsh Stainless Pvt. Ltd.	0.18
20	Energyedge Power Trading Pvt. Ltd.	0.17
21	Statkraft Markets Pvt. Ltd.	0.16
22	Ideal Energy Solution Pvt. Ltd.	0.16
23	NLC India Ltd.	0.13
24	Powerfull Energy Trading Pvt. Ltd.	0.09
25	Greenko Energies Pvt Ltd	0.09
26	SJVN Ltd.	0.07
27	ReNew Energy Markets Pvt. Ltd.	0.03
28	Abja Power Private Limited	0.03
29	Phillip Commodities India (P) Ltd.	0.03
30	Customized Energy Solutions India (P) Ltd.	0.02
31	Renesys Solar Pvt. Ltd.	0.02
32	REL Power Trading LLP	0.01
33	Saini Power Transactor	0.01
34	Shell Energy Marketing and Trading India Pvt. Ltd.	0.005
35	Altilium Energie Private Limited	0.001
<b>TOTAL</b>		<b>100.00%</b>
<b>Top 5 trading licensees</b>		<b>81.33%</b>
<b>Herfindahl-Hirschman Index</b>		<b>0.1721</b>

*Note 1: Volume of electricity transacted by the trading licensees includes bilateral transactions (inter-state & intra-state) and the transactions undertaken through power exchanges.*

*Source: Information submitted by trading licensees*

**Figure 5: Percentage Share of Electricity Transacted by Trading Licensees, March 2024**



**Table-3: PRICE OF ELECTRICITY TRANSACTED THROUGH TRADERS, MARCH 2024**

Sr.No	Item	Sale Price of Traders (₹/kWh)
1	Minimum	2.31
2	Maximum	10.00
3	Weighted Average	8.07

Source: Information submitted by trading licensees

**Table-4: PRICE OF ELECTRICITY TRANSACTED THROUGH TRADERS (TIME-WISE), MARCH 2024**

Sr.No	Period of Trade	Sale Price of Traders (₹/kWh)
1	RTC	8.04
2	PEAK	9.95
3	OFF PEAK	7.35

Source: Information submitted by trading licensees

**Table-5: PRICE OF ELECTRICITY TRANSACTED IN DAY AHEAD MARKET, MARCH 2024**

Sr.No	ACP	Price in IEX (₹/kWh)	Price in PXIL (₹/kWh)	Price in HPX (₹/kWh)
1	Minimum	0.50	5.78	-
2	Maximum	10.00	5.78	-
3	Weighted Average	3.96	5.78	-

Source: IEX, PXIL and HPX

**Table-6: PRICE OF ELECTRICITY TRANSACTED IN GREEN DAY AHEAD MARKET, MARCH 2024**

Sr.No	ACP	Price in IEX (₹/kWh)	Price in PXIL (₹/kWh)	Price in HPX (₹/kWh)
1	Minimum	1.00	-	-
2	Maximum	10.00	-	-
3	Weighted Average	3.81	-	-

Source: IEX, PXIL and HPX

**Table-7: PRICE OF ELECTRICITY TRANSACTED IN HIGH PRICE DAY AHEAD MARKET, MARCH 2024**

Sr.No	ACP	Price in IEX (₹/kWh)	Price in PXIL (₹/kWh)	Price in HPX (₹/kWh)
1	Minimum	-	-	-
2	Maximum	-	-	-
3	Weighted Average	-	-	-

Source: IEX, PXIL and HPX

**Table-8: PRICE OF ELECTRICITY TRANSACTED IN REAL TIME MARKET, MARCH 2024**

Sr.No	ACP	Price in IEX (₹/kWh)	Price in PXIL (₹/kWh)	Price in HPX (₹/kWh)
1	Minimum	0.90	10.00	10.00
2	Maximum	10.00	10.00	10.00
3	Weighted Average	3.91	10.00	10.00

Source: IEX, PXIL and HPX

**Table-9: VOLUME AND PRICE OF ELECTRICITY IN TERM AHEAD MARKET OF IEX, MARCH 2024**

Sr.No	Term ahead contracts	Actual Scheduled Volume (MU)	Weighted Average Price (₹/kWh)
1	Intra-Day Contracts	0.24	8.50
2	Day Ahead Contingency Contracts	46.99	4.67
3	Daily Contracts	176.45	7.50
4	Monthly Contracts	98.21	8.00
5	Any Day Single Sided Contracts	484.56	8.47
	<b>Total</b>	<b>806.45</b>	<b>7.98</b>

Source: IEX

**Table-10: VOLUME AND PRICE OF ELECTRICITY IN TERM AHEAD MARKET OF PXIL, MARCH 2024**

Sr.No	Term ahead contracts	Actual Scheduled Volume (MU)	Weighted Average Price (₹/kWh)
1	Intra-Day Contracts	4.21	7.65
2	Day Ahead Contingency Contracts	171.44	4.85
3	Daily Contracts	147.86	8.28
4	Monthly Contracts	431.83	8.34
5	Any Day Single Sided Contracts	290.91	9.00
	<b>Total</b>	<b>1046.25</b>	<b>7.94</b>

Source: PXIL

<b>Table-11: VOLUME AND PRICE OF ELECTRICITY IN TERM AHEAD MARKET OF HPX, MARCH 2024</b>			
<b>Sr.No</b>	<b>Term ahead contracts</b>	<b>Actual Scheduled Volume (MU)</b>	<b>Weighted Average Price (₹/kWh)</b>
1	Intra-Day Contracts	2.15	8.60
2	Day Ahead Contingency Contracts	156.46	7.47
3	Daily Contracts	135.78	7.80
4	Monthly Contracts	468.30	7.96
5	Any Day Single Sided Contracts	286.66	8.56
	<b>Total</b>	<b>1049.35</b>	<b>8.03</b>

Source: HPX

<b>Table-12: VOLUME AND PRICE OF ELECTRICITY IN GREEN TERM AHEAD MARKET OF IEX, MARCH 2024</b>			
<b>Sr. No</b>	<b>Green Term ahead contracts</b>	<b>Actual Scheduled Volume (MU)</b>	<b>Weighted Average Price (₹/kWh)</b>
1	Daily Contracts	5.21	6.50
2	Any Day Single Sided Contracts	10.98	4.70
	<b>Total</b>	<b>16.19</b>	<b>5.28</b>

Source: IEX

<b>Table-13: VOLUME AND PRICE OF ELECTRICITY IN GREEN TERM AHEAD MARKET OF PXIL, MARCH 2024</b>			
<b>Sr. No</b>	<b>Green Term ahead contracts</b>	<b>Actual Scheduled Volume (MU)</b>	<b>Weighted Average Price (₹/kWh)</b>
1	Intra-Day Contracts	0.11	5.96
2	Day Ahead Contingency Contracts	5.07	4.65
	<b>Total</b>	<b>5.18</b>	<b>4.68</b>

Source: PXIL

<b>Table-14: VOLUME AND PRICE OF ELECTRICITY IN GREEN TERM AHEAD MARKET OF HPX, MARCH 2024</b>			
<b>Sr. No</b>	<b>Green Term ahead contracts</b>	<b>Actual Scheduled Volume (MU)</b>	<b>Weighted Average Price (₹/kWh)</b>
1	Day Ahead Contingency Contracts	97.14	3.85
	<b>Total</b>	<b>97.14</b>	<b>3.85</b>

Source: HPX

<b>Table-15: VOLUME AND PRICE OF ELECTRICITY IN HIGH PRICE TERM AHEAD MARKET OF IEX, MARCH 2024</b>			
<b>Sr. No</b>	<b>High Price Term ahead contracts</b>	<b>Actual Scheduled Volume (MU)</b>	<b>Weighted Average Price (₹/kWh)</b>
1	No Trade	0.00	-
	<b>Total</b>	<b>0.00</b>	<b>-</b>

Source: IEX

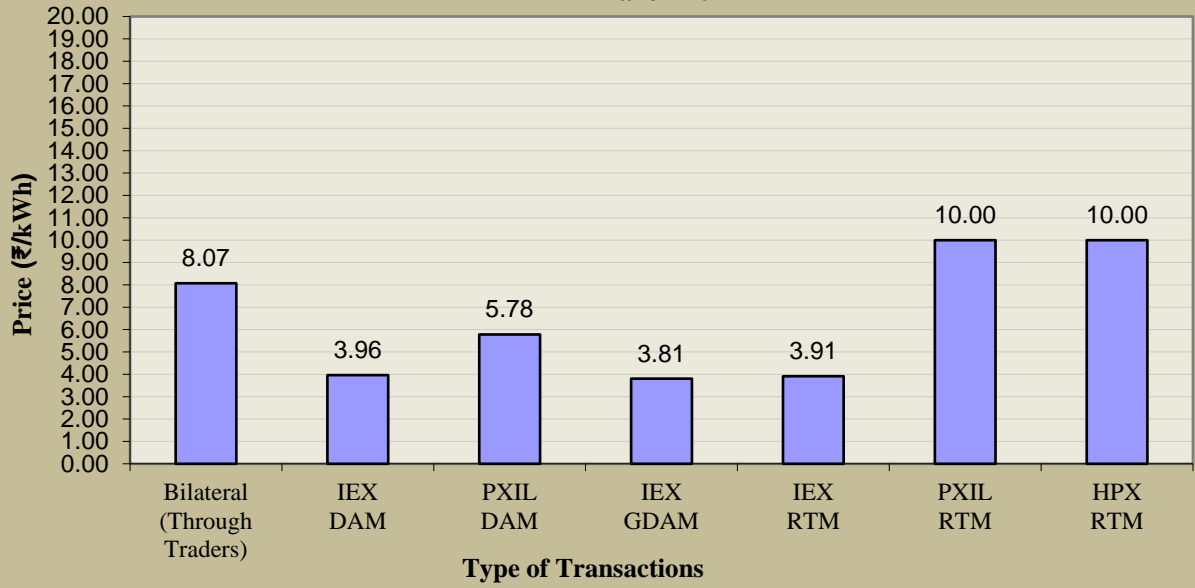
<b>Table-16: VOLUME AND PRICE OF ELECTRICITY IN HIGH PRICE TERM AHEAD MARKET OF PXIL, MARCH 2024</b>			
<b>Sr. No</b>	<b>High Price Term ahead contracts</b>	<b>Actual Scheduled Volume (MU)</b>	<b>Weighted Average Price (₹/kWh)</b>
1	Day Ahead Contingency Contracts	0.00	-
	<b>Total</b>	<b>0.00</b>	<b>-</b>

Source: PXIL

<b>Table-17: VOLUME AND PRICE OF ELECTRICITY IN HIGH PRICE TERM AHEAD MARKET OF HPX, MARCH 2024</b>			
<b>Sr. No</b>	<b>High Price Term ahead contracts</b>	<b>Actual Scheduled Volume (MU)</b>	<b>Weighted Average Price (₹/kWh)</b>
1	No Trade	0.00	-
	<b>Total</b>	<b>0.00</b>	<b>-</b>

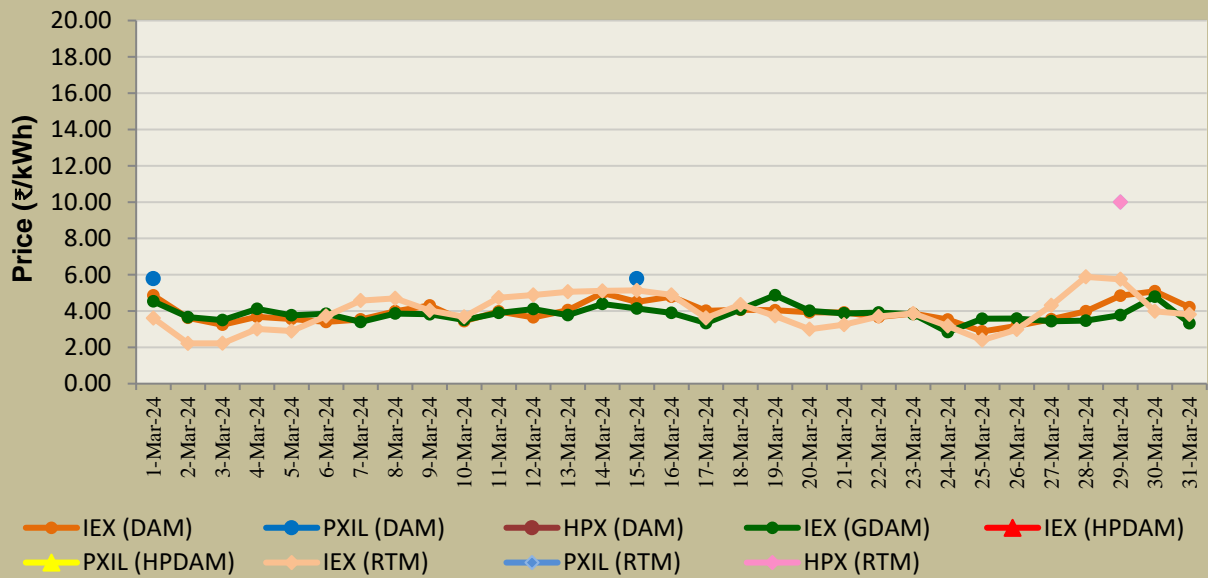
Source: HPX

**Figure-6: Weighted Average Price of Short-term Transactions of Electricity, March 2024**



*Note: No electricity was transacted in DAM of HPX, G-DAM of PXIL & HPX, and in HP-DAM of all Power Exchanges during March 2024*

**Figure-7: Weighted Average Price of Short-term Transactions of Electricity, March 2024 (Day-wise)**



*Note: No electricity was transacted in DAM of HPX, G-DAM of PXIL & HPX, and in HP-DAM of all Power Exchanges during March 2024*



<b>Table-18: VOLUME OF ELECTRICITY SOLD IN DAY AHEAD MARKET THROUGH POWER EXCHANGES, MARCH 2024</b>		
<b>Name of the Entity</b>	<b>Volume of Sale (MUs)</b>	<b>% of Volume</b>
UTTAR PRADESH	666.72	14.31
ARTPP	328.96	7.06
JINDAL STAGE-II	273.27	5.87
CHHATTISGARH	230.37	4.94
ESSAR POWER	230.22	4.94
MP	207.42	4.45
DB POWER	186.56	4.00
RAIGARH_ADANI	170.49	3.66
BIHAR	149.18	3.20
RAJASTHAN	146.03	3.13
TELANGANA	134.99	2.90
DELHI	119.93	2.57
JITPL	113.89	2.44
JINDAL POWER	109.71	2.36
HARYANA	109.63	2.35
DCPP	104.15	2.24
MAHARASHTRA	96.02	2.06
HIMACHAL PRADESH	74.77	1.61
WEST BENGAL	69.35	1.49
ODISHA	66.45	1.43
ANDHRA PRADESH	55.75	1.20
RENEW_ROSHNI FATEHGARH	46.40	1.00
GUJARAT	45.68	0.98
RENEW_SAAYAN	45.63	0.98
RENEW_SR_SLR	45.35	0.97
NTPC STATIONS-ER	40.61	0.87
CHANDIGARH	37.95	0.81
SEMBCORP	37.12	0.80
ACBIL	36.17	0.78
RKM POWER	35.67	0.77
TAMIL NADU	35.62	0.76
JAYPEE NIGRIE	33.52	0.72
ADANI_WIND	31.88	0.68
RENEW_SPRATAP	30.06	0.65
ASEJTL_SLR	29.76	0.64
PONDICHERRY	29.61	0.64
IBEUL	26.76	0.57
ADEPT	26.63	0.57
NPGC	26.57	0.57
ADANI_4RE	26.45	0.57
DHARIWAL POWER	26.38	0.57
AMP_GREEN6	22.56	0.48
ONEVOLT	21.11	0.45
ADANI_S_RJ2	19.98	0.43
KARCHAM WANGTOO	18.75	0.40
NTPC STATIONS-SR	17.54	0.38
NTPC STATIONS-NR	16.74	0.36
RENEW_SVIHAAN	16.64	0.36
AD HYDRO	14.34	0.31
DVC	12.60	0.27
TRN ENERGY	11.48	0.25
GOA	9.94	0.21
GRIAN	9.57	0.21
DGEN MEGA POWER	9.17	0.20

ADHUNIK POWER LTD	9.11	0.20
AMPLUS_AGES	8.36	0.18
SIMHAPURI	8.09	0.17
RENEW_SOJAS	6.72	0.14
SHREE CEMENT	6.38	0.14
SAINJ HEP	6.34	0.14
MARUTI COAL	5.72	0.12
OSTRO Hiriyur	5.56	0.12
REENERGY5_WIND	5.44	0.12
ADANI GREEN_25B (INFIRM)	5.19	0.11
SINGOLI BHATWARI HEP	4.53	0.10
KSK MAHANADI	4.35	0.09
SKS POWER	4.12	0.09
SORANG HEP	4.04	0.09
ADANI_W_KUTCHH4 (INFIRM)	3.80	0.08
NTPC STATIONS-WR	3.44	0.07
EMCO	3.40	0.07
NAGALAND	3.14	0.07
JHABUA POWER_MP	2.65	0.06
RENEW_ROSHNI	2.10	0.04
UTTARAKHAND	2.03	0.04
PUNJAB	1.96	0.04
TESPL	1.70	0.04
IL&FS	1.32	0.03
MIZORAM	1.24	0.03
BALCO	1.22	0.03
KERALA	1.17	0.03
NTPC STATIONS-NER	1.06	0.02
J & K	0.78	0.02
CONTINNUM PT	0.75	0.02
MEGHALAYA	0.71	0.02
LANCO BUDHIL	0.66	0.01
TPSL	0.61	0.01
KBUNL	0.44	0.01
IGSTPS	0.44	0.01
NEEPCO STATIONS	0.42	0.01
ADANI GREEN_26B (INFIRM)	0.42	0.01
GMR KAMALANGA	0.41	0.01
MANIPUR	0.19	0.00
NLC	0.18	0.00
KARNATAKA	0.12	0.00
MB POWER	0.08	0.002
NETCL VALLUR	0.06	0.001
NANI VIRANI_W	0.04	0.001
TRIPURA	0.02	0.0004
INOX_BHUJ	0.01	0.0002
<b>Total</b>	<b>4658.63</b>	<b>100.00</b>
<b>Volume sold by top 5 Regional Entities</b>	<b>1729.54</b>	<b>37.13</b>

<b>Table-19: VOLUME OF ELECTRICITY PURCHASED IN DAY AHEAD MARKET THROUGH POWER EXCHANGES, MARCH 2024</b>		
<b>Name of the Entity</b>	<b>Volume of Purchase (MUs)</b>	<b>% of Volume</b>
GUJARAT	971.49	20.85
TELANGANA	720.35	15.46
DGPCL Bhutan	291.90	6.27
PUNJAB	285.32	6.12
UTTARAKHAND	264.43	5.68
NEPAL(NVVN)	259.54	5.57
TAMIL NADU	253.85	5.45
UTTAR PRADESH	244.82	5.26
RAJASTHAN	184.96	3.97
ODISHA	181.60	3.90
J & K	162.35	3.48
MAHARASHTRA	135.23	2.90
ANDHRA PRADESH	118.71	2.55
WEST BENGAL	89.99	1.93
KERALA	78.46	1.68
MP	49.31	1.06
KARNATAKA	47.94	1.03
MEGHALAYA	39.27	0.84
DD&DNH	34.66	0.74
AMPS Hazira	33.25	0.71
HARYANA	33.13	0.71
NEP	31.78	0.68
NCR ALLAHABAD	24.17	0.52
HIMACHAL PRADESH	22.44	0.48
GOA	18.25	0.39
DELHI	17.84	0.38
MB POWER	13.90	0.30
ARUNACHAL PRADESH	13.23	0.28
ASSAM	7.44	0.16
SKS POWER	6.95	0.15
CHHATTISGARH	6.54	0.14
JHARKHAND	4.49	0.10
MANIPUR	2.96	0.06
NAGALAND	2.91	0.06
SIKKIM	1.98	0.04
BIHAR	1.13	0.02
JINDAL POWER	1.03	0.02
TRIPURA	0.98	0.02
CHANDIGARH	0.07	0.002
NLC	0.01	0.0002
DVC	0.01	0.0001
<b>TOTAL</b>	<b>4658.63</b>	<b>100.00</b>
<b>Volume purchased by top 5 Regional Entities</b>	<b>2533.47</b>	<b>54.38</b>

**Table-20: VOLUME OF ELECTRICITY SOLD IN GREEN DAY AHEAD MARKET THROUGH POWER EXCHANGES, MARCH 2024**

<b>Name of the Entity</b>	<b>Volume of Sale (MUs)</b>	<b>% of Volume</b>
ADANI_4RE	73.33	17.82
ANDHRA PRADESH	63.26	15.37
ASEJTL_SLR	27.51	6.69
ADANI_WIND	23.94	5.82
MP	23.64	5.74
RENEW_SOJAS	15.88	3.86
HIMACHAL PRADESH	15.13	3.68
CONTINNUM PT	14.03	3.41
TPSL	13.95	3.39
AMPLUS_AGES	13.40	3.26
TESPL	12.41	3.02
ADANI_W_KUTCHH4 (INFIRM)	12.15	2.95
MAHARASHTRA	10.79	2.62
GRIAN	9.31	2.26
ADANI GREEN_25B (INFIRM)	8.84	2.15
OSTRO Hiriyur	8.06	1.96
UTTAR PRADESH	7.54	1.83
RENEW_ROSHNI FATEHGARH	6.53	1.59
RENEW_SAAYAN	6.30	1.53
SINGOLI BHATWARI HEP	5.01	1.22
JSW_RENEW_2	4.86	1.18
BIHAR	4.77	1.16
WEST BENGAL	4.71	1.14
RENEW_ROSHNI	4.03	0.98
RENEW_SPRATAP	3.89	0.95
RAJASTHAN	3.62	0.88
RENERGY5_WIND	3.37	0.82
RENEW_SR_SLR	2.28	0.55
RENEW_SVIHAAN	2.12	0.52
TELANGANA	1.64	0.40
NANI VIRANI_W	1.37	0.33
SIKKIM	1.21	0.29
HARYANA	0.92	0.22
ADANI GREEN_26B (INFIRM)	0.67	0.16
INOX_BHUJ	0.54	0.13
J & K	0.20	0.05
KARNATAKA	0.13	0.03
ADANIRE_55 (INFIRM)	0.10	0.02
ADANI GREEN_25A (INFIRM)	0.01	0.003
ADANI_S_RJ2	0.01	0.002
<b>Total</b>	<b>411.49</b>	<b>100.00</b>
<b>Volume sold by top 5 Regional Entities</b>	<b>211.68</b>	<b>51.44</b>

<b>Table-21: VOLUME OF ELECTRICITY PURCHASED IN GREEN DAY AHEAD MARKET THROUGH POWER EXCHANGES, MARCH 2024</b>		
<b>Name of the Entity</b>	<b>Volume of Purchase (MUs)</b>	<b>% of Volume</b>
AMPS Hazira	63.70	15.48
TAMIL NADU	53.35	12.97
MAHARASHTRA	52.01	12.64
PUNJAB	41.48	10.08
DVC	32.76	7.96
DELHI	32.02	7.78
UTTAR PRADESH	27.70	6.73
GUJARAT	14.24	3.46
NCR ALLAHABAD	14.22	3.46
RAJASTHAN	12.91	3.14
KARNATAKA	12.13	2.95
ODISHA	10.02	2.43
KERALA	9.26	2.25
HARYANA	7.85	1.91
ANDHRA PRADESH	7.58	1.84
MP	7.18	1.75
CHHATTISGARH	3.88	0.94
JHARKHAND	3.69	0.90
BALCO	3.54	0.86
DD&DNH	1.22	0.30
TELANGANA	0.75	0.18
<b>TOTAL</b>	<b>411.49</b>	<b>100.00</b>
<b>Volume purchased by top 5 Regional Entities</b>	<b>243.30</b>	<b>59.13</b>

**Table-22: VOLUME OF ELECTRICITY SOLD IN REAL TIME MARKET THROUGH POWER EXCHANGES, MARCH 2024**

<b>Name of the Entity</b>	<b>Volume of Sale (MUs)</b>	<b>% of Volume</b>
MP	418.43	15.02
BIHAR	417.85	15.00
UTTAR PRADESH	225.87	8.11
ODISHA	134.60	4.83
CHHATTISGARH	119.19	4.28
RAJASTHAN	110.72	3.97
MAHARASHTRA	102.09	3.66
JHARKHAND	90.57	3.25
WEST BENGAL	88.16	3.16
NTPC STATIONS-ER	82.84	2.97
KAPS 3&4 (INFIRM)	65.45	2.35
DELHI	51.06	1.83
ASSAM	50.52	1.81
NTPC STATIONS-NR	49.47	1.78
J & K	48.38	1.74
ANDHRA PRADESH	42.24	1.52
NPGC	42.23	1.52
TELANGANA	42.02	1.51
HIMACHAL PRADESH	40.86	1.47
NTPC STATIONS-WR	36.94	1.33
HARYANA	36.47	1.31
PONDICHERRY	25.59	0.92
UTTARAKHAND	22.18	0.80
SEMBCORP	19.48	0.70
TRN ENERGY	18.87	0.68
GUJARAT	18.03	0.65
ESSAR POWER	16.94	0.61
MANIPUR	16.84	0.60
SASAN UMPP	16.64	0.60
RKM POWER	16.58	0.60
NTPC STATIONS-SR	14.80	0.53
KARNATAKA	14.24	0.51
NEEPCO STATIONS	13.55	0.49
BALCO	11.70	0.42
TRIPURA	11.48	0.41
RENEW_SOJAS	11.40	0.41
MB POWER	9.85	0.35
PUNJAB	9.75	0.35
MTPS	9.42	0.34
NLC	9.21	0.33
ARTPP	8.47	0.30
ADANI_WIND	8.25	0.30
TAMIL NADU	8.12	0.29
KERALA	7.24	0.26
RENEW_SR_SLR	7.15	0.26
SIKKIM	6.96	0.25
ACBIL	6.81	0.24
ARUNACHAL PRADESH	5.93	0.21
NEPAL(NVVN)	5.90	0.21
NREL_DAYAPAR (W)	5.74	0.21
RENEW_SAAYAN	5.53	0.20
JHABUA POWER_MP	5.31	0.19
JITPL	5.26	0.19
SIMHAPURI	5.18	0.19
ADANI_4RE	5.16	0.19
RAIGARH_ADANI	5.06	0.18
DVC	5.04	0.18

GOA	4.93	0.18
RENEW_SPRATAP	4.91	0.18
RENEW_ROSHNI FATEHGARH	4.88	0.18
JINDAL STAGE-II	4.86	0.17
TESPL	4.65	0.17
IGSTPS	4.30	0.15
MARUTI COAL	4.10	0.15
NTPC STATIONS-NER	3.83	0.14
IL&FS	3.74	0.13
KSK MAHANADI	3.65	0.13
ONEVOLT	3.60	0.13
ASEJTL_SLR	3.41	0.12
AMPLUS_AGES	3.25	0.12
EMCO	3.10	0.11
DD&DNH	2.86	0.10
DB POWER	2.82	0.10
AMP_GREEN6	2.82	0.10
SINGOLI BHATWARI HEP	2.62	0.09
JINDAL POWER	2.59	0.09
DGEN MEGA POWER	2.50	0.09
GRIAN	2.36	0.08
ADHUNIK POWER LTD	1.95	0.07
NAGALAND	1.77	0.06
RENEW_SVIHAAN	1.63	0.06
TPSL	1.48	0.05
NETCL VALLUR	1.30	0.05
RENEW_ROSHNI	1.01	0.04
KARCHAM WANGTOO	0.97	0.03
ADEPT	0.96	0.03
SAINJ HEP	0.94	0.03
IBEUL	0.92	0.03
SORANG HEP	0.92	0.03
DCPP	0.79	0.03
SKS POWER	0.75	0.03
CHANDIGARH	0.73	0.03
ONGC PALATANA	0.72	0.03
ADANI GREEN_25B (INFIRM)	0.67	0.02
BRBCL,NABINAGAR	0.66	0.02
OSTRO Hiriyur	0.54	0.02
SHREE CEMENT	0.39	0.01
AD HYDRO	0.23	0.01
LANCO BUDHIL	0.20	0.01
ADANI_S_RJ2	0.14	0.00
CHUZACHEN HEP	0.11	0.00
ADANI_W_KUTCHH4 (INFIRM)	0.10	0.00
JAYPEE NIGRIE	0.09	0.00
ADANIRE_55 (INFIRM)	0.08	0.00
GMR KAMALANGA	0.07	0.00
ADANI GREEN_26B (INFIRM)	0.06	0.00
PARE HEP	0.05	0.00
DOYANG HEP	0.05	0.00
RANGANADI HEP	0.04	0.001
RENERGY5_WIND	0.04	0.001
ADANI GREEN_25A (INFIRM)	0.02	0.001
MEGHALAYA	0.01	0.0003
TASHIDENG HEP	0.001	0.00004
<b>Total</b>	<b>2785.82</b>	<b>100.00</b>
<b>Volume sold by top 5 Regional Entities</b>	<b>1315.95</b>	<b>47.24</b>

**Table-23: VOLUME OF ELECTRICITY PURCHASED IN REAL TIME MARKET THROUGH POWER EXCHANGES, MARCH 2024**

Name of the Entity	Volume of Purchase (MUs)	% of Volume
PUNJAB	497.37	17.85
TELANGANA	294.72	10.58
RAJASTHAN	214.41	7.70
UTTAR PRADESH	193.31	6.94
KERALA	192.53	6.91
ODISHA	180.49	6.48
TAMIL NADU	169.53	6.09
WEST BENGAL	138.83	4.98
MAHARASHTRA	127.85	4.59
GUJARAT	118.89	4.27
ANDHRA PRADESH	103.42	3.71
J & K	90.41	3.25
DELHI	49.68	1.78
KARNATAKA	43.16	1.55
SKS POWER	41.76	1.50
UTTARAKHAND	32.17	1.15
ASSAM	30.82	1.11
ESSAR POWER	29.99	1.08
CHHATTISGARH	28.29	1.02
HARYANA	26.92	0.97
DD&DNH	25.44	0.91
AMPS Hazira	17.44	0.63
DGPCL Bhutan	15.43	0.55
HIMACHAL PRADESH	14.94	0.54
JINDAL STAGE-II	12.71	0.46
ARTPP	11.65	0.42
DVC	11.36	0.41
MEGHALAYA	10.38	0.37
ARUNACHAL PRADESH	6.80	0.24
NEPAL(NVVN)	6.32	0.23
MANIPUR	6.26	0.22
MB POWER	4.86	0.17
BALCO	4.58	0.16
JINDAL POWER	4.48	0.16
JHARKHAND	4.41	0.16
MP	4.33	0.16
GOA	3.86	0.14
NCR ALLAHABAD	2.51	0.09
DCPP	2.28	0.08
SIKKIM	1.96	0.07
RENEW_SR_SLR	1.68	0.06
TRIPURA	1.67	0.06
RGPPL_IR	1.36	0.05
NAGALAND	1.29	0.05
NTPC STATIONS-WR	1.14	0.04
BIHAR	0.96	0.03
TRN ENERGY	0.59	0.02
ACBIL	0.20	0.01
CHANDIGARH	0.16	0.01
SIMHAPURI	0.12	0.004
NEP	0.09	0.003
SAINJ HEP	0.04	0.002
<b>TOTAL</b>	<b>2785.82</b>	<b>100.00</b>
<b>Volume purchased by top 5 Regional Entities</b>	<b>1392.34</b>	<b>49.98</b>



<b>Table-24: TOTAL VOLUME OF NET TRANSACTIONS THROUGH POWER EXCHANGES (REGIONAL ENTITY-WISE), MARCH 2024</b>		
<b>S. No.</b>	<b>Name of the Entity</b>	<b>Total volume of net transactions through Power Exchanges*</b>
1	GUJARAT	1040.90
2	TELANGANA	837.17
3	PUNJAB	812.45
4	TAMIL NADU	432.99
5	DGPCL Bhutan	307.33
6	UTTARAKHAND	272.39
7	KERALA	271.84
8	NEPAL(NVVN)	259.96
9	J & K	203.39
10	ODISHA	171.05
11	RAJASTHAN	151.92
12	AMPS Hazira	114.39
13	MAHARASHTRA	106.19
14	KARNATAKA	88.73
15	ANDHRA PRADESH	68.45
16	WEST BENGAL	66.60
17	DD&DNH	58.46
18	MEGHALAYA	48.93
19	SKS POWER	43.84
20	NCR ALLAHABAD	40.89
21	NEP	31.87
22	DVC	26.49
23	ARUNACHAL PRADESH	14.09
24	MB POWER	8.83
25	GOA	7.24
26	RGPPL_IR	1.36
27	TASHIDENG HEP	-0.001
28	ADANI GREEN_25A (INFIRM)	-0.03
29	RANGANADI HEP	-0.04
30	DOYANG HEP	-0.05
31	PARE HEP	-0.05
32	CHUZACHEN HEP	-0.11
33	ADANIRE_55 (INFIRM)	-0.18
34	KBUNL	-0.44
35	GMR KAMALANGA	-0.48
36	INOX_BHUJ	-0.55
37	BRBCL,NABINAGAR	-0.66
38	NAGALAND	-0.71
39	ONGC PALATANA	-0.72
40	LANCO BUDHIL	-0.86
41	ADANI GREEN_26B (INFIRM)	-1.15
42	MIZORAM	-1.24
43	NETCL VALLUR	-1.37
44	NANI VIRANI_W	-1.41
45	SIKKIM	-4.24
46	IGSTPS	-4.74
47	BALCO	-4.80
48	JSW_RENEW_2	-4.86
49	NTPC STATIONS-NER	-4.89
50	SORANG HEP	-4.96
51	IL&FS	-5.06
52	NREL_DAYAPAR (W)	-5.74
53	EMCO	-6.50
54	SHREE CEMENT	-6.77
55	RENEW_ROSHNI	-7.13
56	SAINJ HEP	-7.25
57	MANIPUR	-7.81
58	JHABUA POWER_MP	-7.96
59	KSK MAHANADI	-8.00
60	RENERGY5_WIND	-8.85
61	TRIPURA	-8.85
62	NLC	-9.38

63	MTPS	-9.42
64	MARUTI COAL	-9.82
65	ADHUNIK POWER LTD	-11.07
66	DGEN MEGA POWER	-11.67
67	SINGOLI BHATWARI HEP	-12.15
68	ASSAM	-12.26
69	SIMHAPURI	-13.15
70	NEEPCO STATIONS	-13.97
71	OSTRO Hiriyur	-14.16
72	AD HYDRO	-14.57
73	ADANI GREEN_25B (INFIRM)	-14.70
74	CONTINNUM PT	-14.78
75	TPSL	-16.04
76	ADANI_W_KUTCHH4 (INFIRM)	-16.05
77	SASAN UMPP	-16.64
78	TESPL	-18.76
79	KARCHAM WANGTOO	-19.72
80	ADANI_S_RJ2	-20.12
81	RENEW_SVIHAAN	-20.40
82	GRIAN	-21.23
83	ONEVOLT	-24.71
84	AMPLUS_AGES	-25.01
85	AMP_GREEN6	-25.38
86	DHARIWAL POWER	-26.38
87	ADEPT	-27.59
88	IBEUL	-27.68
89	TRN ENERGY	-29.76
90	NTPC STATIONS-SR	-32.33
91	JAYPEE NIGRIE	-33.60
92	RENEW_SOJAS	-34.01
93	CHANDIGARH	-38.46
94	RENEW_SPRATAP	-38.85
95	NTPC STATIONS-WR	-39.24
96	ACBIL	-42.79
97	RKM POWER	-52.25
98	RENEW_SR_SLR	-53.10
99	PONDICHERRY	-55.21
100	SEMBCORP	-56.60
101	RENEW_SAAYAN	-57.46
102	RENEW_ROSHNI FATEHGARH	-57.82
103	ASEJTL_SLR	-60.69
104	ADANI_WIND	-64.07
105	KAPS 3&4 (INFIRM)	-65.45
106	NTPC STATIONS-NR	-66.21
107	NPGC	-68.81
108	DELHI	-71.45
109	JHARKHAND	-77.99
110	HARYANA	-79.12
111	HIMACHAL PRADESH	-93.37
112	DCPP	-102.65
113	ADANI_4RE	-104.95
114	JINDAL POWER	-106.79
115	JITPL	-119.15
116	NTPC STATIONS-ER	-123.44
117	RAIGARH_ADANI	-175.55
118	DB POWER	-189.38
119	ESSAR POWER	-217.18
120	JINDAL STAGE-II	-265.42
121	CHHATTISGARH	-310.86
122	ARTPP	-325.78
123	UTTAR PRADESH	-434.31
124	BIHAR	-569.71
125	MP	-588.67
* Total net includes net of transactions of electricity through various segments on power exchanges		
(-) indicates sale and (+) indicates purchase		

**Table-25: DETAILS OF CONGESTION IN POWER EXCHANGES, MARCH 2024**

	Details of Congestion	Day Ahead Market			Green Day Ahead Market			High Price Day Ahead Market			Real Time Market		
		IEX	PXIL	HPX	IEX	PXIL	HPX	IEX	PXIL	HPX	IEX	PXIL	HPX
1	Unconstrained Cleared Volume (MUs)	4664.92	0.04	0.00	413.17	0.00	0.00	0.00	0.00	0.00	2785.66	0.10	0.11
2	Actual Cleared Volume and hence scheduled (MUs)	4658.59	0.04	0.00	411.49	0.00	0.00	0.00	0.00	0.00	2785.62	0.10	0.11
3	Volume of electricity that could not be cleared and hence not scheduled because of congestion (MUs) *	6.33	0.00	0.00	1.69	0.00	0.00	0.00	0.00	0.00	0.04	0.00	0.00
4	Volume of electricity that could not be cleared and hence not scheduled because of reasons other than congestion (MUs)	0.00	0.00	0.00	0.00	0.00	0.00	0.00	0.00	0.00	0.00	0.00	0.00
5	Volume of electricity that could not be cleared as % to Unconstrained Cleared Volume	0.14%	0.00%	0.00%	0.41%	0.00%	0.00%	0.00%	0.00%	0.00%	0.001%	0.00%	0.00%
6	Percentage of the time congestion occurred during the month (Number of hours congestion occurred/ Total number of hours in the month)	7.96%	0.00%	0.00%	3.36%	0.00%	0.00%	0.00%	0.00%	0.00%	0.10%	0.00%	0.00%
7	Congestion occurrence (%) time block wise												
	0.00 - 6.00 hours	0.00%	0.00%	0.00%	0.00%	0.00%	0.00%	0.00%	0.00%	0.00%	0.00%	0.00%	0.00%
	6.00 - 12.00 hours	10.13%	0.00%	0.00%	26.00%	0.00%	0.00%	0.00%	0.00%	0.00%	0.00%	0.00%	0.00%
	12.00 - 18.00 hours	89.87%	0.00%	0.00%	74.00%	0.00%	0.00%	0.00%	0.00%	0.00%	0.00%	0.00%	0.00%
	18.00 - 24.00 hours	0.00%	0.00%	0.00%	0.00%	0.00%	0.00%	0.00%	0.00%	0.00%	100.00%	0.00%	0.00%

\* This power would have been scheduled had there been no congestion

Source: IEX, PXIL, HPX & NLDC

**Table-26: VOLUME OF TRANSACTIONS THROUGH POWER EXCHANGES (DAY-WISE) (MUs), MARCH 2024**

Date	Day Ahead Market <sup>#</sup>			Green Day Ahead Market <sup>#</sup>			High Price DAM <sup>#</sup>			Real Time Market <sup>#</sup>			Total Electricity Generation (MU) *
	IEX	PXIL	HPX	IEX	PXIL	HPX	IEX	PXIL	HPX	IEX	PXIL	HPX	
1-Mar-24	136.25	0.03	0.00	8.90	0.00	0.00	0.00	0.00	0.00	78.44	0.00	0.00	4108.48
2-Mar-24	120.14	0.00	0.00	11.64	0.00	0.00	0.00	0.00	0.00	95.71	0.00	0.00	3824.84
3-Mar-24	138.02	0.00	0.00	10.13	0.00	0.00	0.00	0.00	0.00	99.49	0.00	0.00	3673.17
4-Mar-24	139.70	0.00	0.00	7.92	0.00	0.00	0.00	0.00	0.00	87.99	0.00	0.00	3939.31
5-Mar-24	123.78	0.00	0.00	12.78	0.00	0.00	0.00	0.00	0.00	95.75	0.00	0.00	4002.25
6-Mar-24	136.48	0.00	0.00	11.33	0.00	0.00	0.00	0.00	0.00	88.75	0.00	0.00	4109.77
7-Mar-24	150.55	0.00	0.00	13.15	0.00	0.00	0.00	0.00	0.00	94.65	0.00	0.00	4128.48
8-Mar-24	180.07	0.00	0.00	12.01	0.00	0.00	0.00	0.00	0.00	76.68	0.00	0.00	4137.87
9-Mar-24	174.75	0.00	0.00	12.85	0.00	0.00	0.00	0.00	0.00	81.56	0.00	0.00	4115.65
10-Mar-24	160.58	0.00	0.00	13.01	0.00	0.00	0.00	0.00	0.00	86.46	0.00	0.00	4054.51
11-Mar-24	170.16	0.00	0.00	13.64	0.00	0.00	0.00	0.00	0.00	83.91	0.00	0.00	4231.58
12-Mar-24	158.06	0.00	0.00	14.42	0.00	0.00	0.00	0.00	0.00	78.10	0.00	0.00	4326.23
13-Mar-24	158.14	0.00	0.00	15.03	0.00	0.00	0.00	0.00	0.00	78.54	0.00	0.00	4328.72
14-Mar-24	157.92	0.00	0.00	7.74	0.00	0.00	0.00	0.00	0.00	75.77	0.00	0.00	4387.87
15-Mar-24	167.15	0.02	0.00	13.58	0.00	0.00	0.00	0.00	0.00	79.08	0.00	0.00	4398.44
16-Mar-24	164.73	0.00	0.00	16.84	0.00	0.00	0.00	0.00	0.00	90.60	0.00	0.00	4338.50
17-Mar-24	151.47	0.00	0.00	16.48	0.00	0.00	0.00	0.00	0.00	83.26	0.00	0.00	4106.72
18-Mar-24	138.61	0.00	0.00	15.92	0.00	0.00	0.00	0.00	0.00	108.43	0.00	0.00	4295.64
19-Mar-24	155.85	0.00	0.00	9.25	0.00	0.00	0.00	0.00	0.00	104.03	0.00	0.00	4304.55
20-Mar-24	153.50	0.00	0.00	14.65	0.00	0.00	0.00	0.00	0.00	116.42	0.00	0.00	4162.92
21-Mar-24	168.67	0.00	0.00	17.67	0.00	0.00	0.00	0.00	0.00	114.20	0.00	0.00	4158.89
22-Mar-24	163.71	0.00	0.00	17.67	0.00	0.00	0.00	0.00	0.00	100.00	0.00	0.00	4269.33
23-Mar-24	164.08	0.00	0.00	17.70	0.00	0.00	0.00	0.00	0.00	99.89	0.00	0.00	4285.94
24-Mar-24	165.77	0.00	0.00	13.26	0.00	0.00	0.00	0.00	0.00	76.49	0.00	0.00	4050.41
25-Mar-24	122.59	0.00	0.00	10.50	0.00	0.00	0.00	0.00	0.00	78.62	0.00	0.00	3772.88
26-Mar-24	135.43	0.00	0.00	12.55	0.00	0.00	0.00	0.00	0.00	89.67	0.00	0.00	4031.34
27-Mar-24	133.57	0.00	0.00	14.99	0.00	0.00	0.00	0.00	0.00	86.39	0.00	0.00	4306.01
28-Mar-24	147.32	0.00	0.00	15.78	0.00	0.00	0.00	0.00	0.00	96.61	0.00	0.00	4476.73
29-Mar-24	136.33	0.00	0.00	13.59	0.00	0.00	0.00	0.00	0.00	91.11	0.10	0.11	4495.89
30-Mar-24	151.71	0.00	0.00	11.94	0.00	0.00	0.00	0.00	0.00	76.24	0.00	0.00	4399.39
31-Mar-24	133.51	0.00	0.00	14.54	0.00	0.00	0.00	0.00	0.00	92.78	0.00	0.00	4227.04
<b>Total</b>	<b>4658.59</b>	<b>0.04</b>	<b>0.00</b>	<b>411.49</b>	<b>0.00</b>	<b>0.00</b>	<b>0.00</b>	<b>0.00</b>	<b>0.00</b>	<b>2785.62</b>	<b>0.10</b>	<b>0.11</b>	<b>129449.35</b>

Source: NLDC

\* As available on CEA Website. Gross Electricity Generation excluding electricity generation from renewables and captive power plants.

<sup>#</sup> Scheduled volume of all the bid areas.

**Note:** With change in the regime on implementation of GNA Regulations from 1<sup>st</sup> October 2023, the volume reported here is not strictly comparable to the volumes in previous months. Some discrepancies were identified by CERC in the data provided by NLDC which prompted further validation. The volume herein is computed after verification with the volumes reported by the Trading Licensees and the Power Exchanges, and are subject to further revision. The Commission has directed NLDC, vide letter dated 05.01.2024, to make necessary provisions to differentiate the type of transactions under GNA and T-GNA at the earliest. In the interim, the columns for daily volume of bilateral transactions have been omitted from this table.

**Table-27(a): PRICE OF DAY AHEAD TRANSACTIONS OF ELECTRICITY (DAY-WISE) (₹/kWh), MARCH 2024**

Market Segment	Day Ahead Market of IEX			Day Ahead Market of PXIL			Day Ahead Market of HPX		
Date	Minimum ACP	Maximum ACP	WA Price*	Minimum ACP	Maximum ACP	WA Price*	Minimum ACP	Maximum ACP	WA Price*
1-Mar-24	3.16	10.00	4.86	5.78	5.78	5.78	-	-	-
2-Mar-24	2.38	7.26	3.63	-	-	-	-	-	-
3-Mar-24	2.25	3.85	3.24	-	-	-	-	-	-
4-Mar-24	1.20	5.31	3.69	-	-	-	-	-	-
5-Mar-24	2.84	4.96	3.56	-	-	-	-	-	-
6-Mar-24	2.25	4.70	3.40	-	-	-	-	-	-
7-Mar-24	2.15	6.00	3.54	-	-	-	-	-	-
8-Mar-24	2.32	8.00	3.99	-	-	-	-	-	-
9-Mar-24	2.25	10.00	4.31	-	-	-	-	-	-
10-Mar-24	2.15	4.77	3.44	-	-	-	-	-	-
11-Mar-24	2.37	10.00	3.98	-	-	-	-	-	-
12-Mar-24	2.84	5.00	3.65	-	-	-	-	-	-
13-Mar-24	2.88	8.00	4.05	-	-	-	-	-	-
14-Mar-24	3.07	10.00	5.00	-	-	-	-	-	-
15-Mar-24	2.98	10.00	4.50	5.78	5.78	5.78	-	-	-
16-Mar-24	3.50	10.00	4.79	-	-	-	-	-	-
17-Mar-24	3.26	5.29	4.01	-	-	-	-	-	-
18-Mar-24	3.32	6.43	4.07	-	-	-	-	-	-
19-Mar-24	2.83	5.50	4.04	-	-	-	-	-	-
20-Mar-24	3.04	6.00	3.93	-	-	-	-	-	-
21-Mar-24	2.83	6.50	3.92	-	-	-	-	-	-
22-Mar-24	2.70	6.00	3.67	-	-	-	-	-	-
23-Mar-24	2.95	6.00	3.86	-	-	-	-	-	-
24-Mar-24	2.00	4.79	3.53	-	-	-	-	-	-
25-Mar-24	0.50	3.91	2.87	-	-	-	-	-	-
26-Mar-24	2.00	4.60	3.18	-	-	-	-	-	-
27-Mar-24	2.38	4.60	3.55	-	-	-	-	-	-
28-Mar-24	2.88	5.50	3.99	-	-	-	-	-	-
29-Mar-24	2.70	10.00	4.85	-	-	-	-	-	-
30-Mar-24	2.67	10.00	5.09	-	-	-	-	-	-
31-Mar-24	2.00	10.00	4.20	-	-	-	-	-	-
	<b>0.50#</b>	<b>10.00#</b>	<b>3.96</b>	<b>5.78#</b>	<b>5.78#</b>	<b>5.78</b>	-	-	-

Source: IEX, PXIL and HPX

\* Weighted average price computed based on Area Clearing Volume (ACV) and Area Clearing Price (ACP) for each hour of the day. Here, ACV and ACP represent the scheduled volume and weighted average price of all the bid areas of power exchanges.

# Maximum/Minimum in the month

**Table-27(b): PRICE OF GREEN DAY AHEAD TRANSACTIONS OF ELECTRICITY (DAY-WISE) (₹/kWh),  
MARCH 2024**

Market Segment	Green Day Ahead Market of IEX			Green Day Ahead Market of PXIL			Green Day Ahead Market of HPX		
	Minimum ACP	Maximum ACP	Weighted Average Price*	Minimum ACP	Maximum ACP	Weighted Average Price*	Minimum ACP	Maximum ACP	Weighted Average Price*
1-Mar-24	3.01	10.00	4.53	-	-	-	-	-	-
2-Mar-24	1.89	7.00	3.66	-	-	-	-	-	-
3-Mar-24	1.50	5.00	3.50	-	-	-	-	-	-
4-Mar-24	2.85	5.50	4.12	-	-	-	-	-	-
5-Mar-24	1.50	5.00	3.76	-	-	-	-	-	-
6-Mar-24	2.85	6.10	3.85	-	-	-	-	-	-
7-Mar-24	1.50	5.70	3.40	-	-	-	-	-	-
8-Mar-24	2.85	7.00	3.86	-	-	-	-	-	-
9-Mar-24	2.70	7.00	3.82	-	-	-	-	-	-
10-Mar-24	2.00	5.91	3.51	-	-	-	-	-	-
11-Mar-24	2.85	6.50	3.90	-	-	-	-	-	-
12-Mar-24	2.85	6.50	4.11	-	-	-	-	-	-
13-Mar-24	2.66	5.80	3.77	-	-	-	-	-	-
14-Mar-24	3.24	8.00	4.39	-	-	-	-	-	-
15-Mar-24	2.17	10.00	4.14	-	-	-	-	-	-
16-Mar-24	1.89	10.00	3.90	-	-	-	-	-	-
17-Mar-24	1.50	6.03	3.34	-	-	-	-	-	-
18-Mar-24	2.76	8.00	4.09	-	-	-	-	-	-
19-Mar-24	4.00	7.00	4.87	-	-	-	-	-	-
20-Mar-24	2.80	6.00	4.01	-	-	-	-	-	-
21-Mar-24	3.00	4.50	3.87	-	-	-	-	-	-
22-Mar-24	2.76	5.00	3.92	-	-	-	-	-	-
23-Mar-24	2.50	6.00	3.83	-	-	-	-	-	-
24-Mar-24	1.50	5.80	2.84	-	-	-	-	-	-
25-Mar-24	3.00	4.44	3.58	-	-	-	-	-	-
26-Mar-24	2.80	4.44	3.58	-	-	-	-	-	-
27-Mar-24	2.38	4.44	3.44	-	-	-	-	-	-
28-Mar-24	2.45	4.50	3.47	-	-	-	-	-	-
29-Mar-24	2.62	6.00	3.78	-	-	-	-	-	-
30-Mar-24	3.00	6.00	4.79	-	-	-	-	-	-
31-Mar-24	1.00	5.50	3.33	-	-	-	-	-	-
	<b>1.00#</b>	<b>10.00#</b>	<b>3.81</b>	-	-	-	-	-	-

Source: IEX, PXIL and HPX

\* Weighted average price computed based on Area Clearing Volume (ACV) and Area Clearing Price (ACP) for each hour of the day. Here, ACV and ACP represent the scheduled volume and weighted average price of all the bid areas of power exchanges.

# Maximum/Minimum in the month

**Table-27(c): PRICE OF REAL TIME TRANSACTIONS OF ELECTRICITY (DAY-WISE) (₹/kWh), MARCH 2024**

Market Segment	Real Time Market of IEX			Real Time Market of PXIL			Real Time Market of HPX		
	Minimum ACP	Maximum ACP	Weighted Average Price*	Minimum ACP	Maximum ACP	Weighted Average Price*	Minimum ACP	Maximum ACP	Weighted Average Price*
1-Mar-24	1.00	10.00	3.61	-	-	-	-	-	-
2-Mar-24	1.00	4.01	2.22	-	-	-	-	-	-
3-Mar-24	1.00	3.97	2.22	-	-	-	-	-	-
4-Mar-24	1.00	5.34	3.01	-	-	-	-	-	-
5-Mar-24	1.66	4.86	2.90	-	-	-	-	-	-
6-Mar-24	1.66	7.60	3.72	-	-	-	-	-	-
7-Mar-24	1.76	10.00	4.57	-	-	-	-	-	-
8-Mar-24	2.79	10.00	4.70	-	-	-	-	-	-
9-Mar-24	1.96	10.00	4.03	-	-	-	-	-	-
10-Mar-24	2.22	6.00	3.68	-	-	-	-	-	-
11-Mar-24	2.79	10.00	4.73	-	-	-	-	-	-
12-Mar-24	2.89	10.00	4.89	-	-	-	-	-	-
13-Mar-24	2.89	10.00	5.06	-	-	-	-	-	-
14-Mar-24	2.89	10.00	5.11	-	-	-	-	-	-
15-Mar-24	2.93	10.00	5.14	-	-	-	-	-	-
16-Mar-24	3.04	10.00	4.89	-	-	-	-	-	-
17-Mar-24	2.78	5.37	3.61	-	-	-	-	-	-
18-Mar-24	2.88	8.00	4.36	-	-	-	-	-	-
19-Mar-24	2.00	6.00	3.73	-	-	-	-	-	-
20-Mar-24	2.00	4.17	3.00	-	-	-	-	-	-
21-Mar-24	1.06	6.16	3.25	-	-	-	-	-	-
22-Mar-24	2.10	6.69	3.70	-	-	-	-	-	-
23-Mar-24	2.10	6.99	3.87	-	-	-	-	-	-
24-Mar-24	0.99	5.47	3.18	-	-	-	-	-	-
25-Mar-24	0.99	3.78	2.40	-	-	-	-	-	-
26-Mar-24	0.90	4.79	2.98	-	-	-	-	-	-
27-Mar-24	2.68	10.00	4.31	-	-	-	-	-	-
28-Mar-24	2.79	10.00	5.88	-	-	-	-	-	-
29-Mar-24	3.20	10.00	5.75	10.00	10.00	10.00	10.00	10.00	10.00
30-Mar-24	2.50	5.99	3.99	-	-	-	-	-	-
31-Mar-24	0.99	10.00	3.81	-	-	-	-	-	-
	<b>0.90#</b>	<b>10.00#</b>	<b>3.91</b>	<b>10.00#</b>	<b>10.00#</b>	<b>10.00</b>	<b>10.00#</b>	<b>10.00#</b>	<b>10.00</b>

Source: IEX, PXIL and HPX

\* Weighted average price computed based on Area Clearing Volume (ACV) and Area Clearing Price (ACP) for each hour of the day. Here, ACV and ACP represent the scheduled volume and weighted average price of all the bid areas of power exchanges.

# Maximum/Minimum in the month

**Table-27(d): PRICE OF HIGH PRICE DAY AHEAD TRANSACTIONS OF ELECTRICITY (DAY-WISE) (₹/kWh),  
MARCH 2024**

Market Segment	High Price Day Ahead Market of IEX			High Price Day Ahead Market of PXIL			High Price Day Ahead Market of HPX		
	Minimum ACP	Maximum ACP	Weighted Average Price	Minimum ACP	Maximum ACP	Weighted Average Price	Minimum ACP	Maximum ACP	Weighted Average Price
1-Mar-24	-	-	-	-	-	-	-	-	-
2-Mar-24	-	-	-	-	-	-	-	-	-
3-Mar-24	-	-	-	-	-	-	-	-	-
4-Mar-24	-	-	-	-	-	-	-	-	-
5-Mar-24	-	-	-	-	-	-	-	-	-
6-Mar-24	-	-	-	-	-	-	-	-	-
7-Mar-24	-	-	-	-	-	-	-	-	-
8-Mar-24	-	-	-	-	-	-	-	-	-
9-Mar-24	-	-	-	-	-	-	-	-	-
10-Mar-24	-	-	-	-	-	-	-	-	-
11-Mar-24	-	-	-	-	-	-	-	-	-
12-Mar-24	-	-	-	-	-	-	-	-	-
13-Mar-24	-	-	-	-	-	-	-	-	-
14-Mar-24	-	-	-	-	-	-	-	-	-
15-Mar-24	-	-	-	-	-	-	-	-	-
16-Mar-24	-	-	-	-	-	-	-	-	-
17-Mar-24	-	-	-	-	-	-	-	-	-
18-Mar-24	-	-	-	-	-	-	-	-	-
19-Mar-24	-	-	-	-	-	-	-	-	-
20-Mar-24	-	-	-	-	-	-	-	-	-
21-Mar-24	-	-	-	-	-	-	-	-	-
22-Mar-24	-	-	-	-	-	-	-	-	-
23-Mar-24	-	-	-	-	-	-	-	-	-
24-Mar-24	-	-	-	-	-	-	-	-	-
25-Mar-24	-	-	-	-	-	-	-	-	-
26-Mar-24	-	-	-	-	-	-	-	-	-
27-Mar-24	-	-	-	-	-	-	-	-	-
28-Mar-24	-	-	-	-	-	-	-	-	-
29-Mar-24	-	-	-	-	-	-	-	-	-
30-Mar-24	-	-	-	-	-	-	-	-	-
31-Mar-24	-	-	-	-	-	-	-	-	-
	-	-	-	-	-	-	-	-	-

Source: IEX, PXIL and HPX



**Table-28: VOLUME OF TRANSACTIONS THROUGH POWER EXCHANGES (REGIONAL ENTITY\*-WISE) (MUs), MARCH 2024**

Name of the Entity	Through DAM		Through GDAM		Through HP-DAM		Through RTM		Total Net***
	Sale	Purchase	Sale	Purchase	Sale	Purchase	Sale	Purchase	
PUNJAB	1.96	285.32	0.00	41.48	0.00	0.00	9.75	497.37	812.45
HARYANA	109.63	33.13	0.92	7.85	0.00	0.00	36.47	26.92	-79.12
RAJASTHAN	146.03	184.96	3.62	12.91	0.00	0.00	110.72	214.41	151.92
DELHI	119.93	17.84	0.00	32.02	0.00	0.00	51.06	49.68	-71.45
UTTAR PRADESH	666.72	244.82	7.54	27.70	0.00	0.00	225.87	193.31	-434.31
UTTARAKHAND	2.03	264.43	0.00	0.00	0.00	0.00	22.18	32.17	272.39
HIMACHAL P	74.77	22.44	15.13	0.00	0.00	0.00	40.86	14.94	-93.37
J & K	0.78	162.35	0.20	0.00	0.00	0.00	48.38	90.41	203.39
CHANDIGARH	37.95	0.07	0.00	0.00	0.00	0.00	0.73	0.16	-38.46
MP	207.42	49.31	23.64	7.18	0.00	0.00	418.43	4.33	-588.67
MAHARASHTRA	96.02	135.23	10.79	52.01	0.00	0.00	102.09	127.85	106.19
GUJARAT	45.68	971.49	0.00	14.24	0.00	0.00	18.03	118.89	1040.90
CHHATTISGARH	230.37	6.54	0.00	3.88	0.00	0.00	119.19	28.29	-310.86
GOA	9.94	18.25	0.00	0.00	0.00	0.00	4.93	3.86	7.24
DD&DNH	0.00	34.66	0.00	1.22	0.00	0.00	2.86	25.44	58.46
ANDHRA PRADESH	55.75	118.71	63.26	7.58	0.00	0.00	42.24	103.42	68.45
KARNATAKA	0.12	47.94	0.13	12.13	0.00	0.00	14.24	43.16	88.73
KERALA	1.17	78.46	0.00	9.26	0.00	0.00	7.24	192.53	271.84
TAMIL NADU	35.62	253.85	0.00	53.35	0.00	0.00	8.12	169.53	432.99
PONDICHERRY	29.61	0.00	0.00	0.00	0.00	0.00	25.59	0.00	-55.21
TELANGANA	134.99	720.35	1.64	0.75	0.00	0.00	42.02	294.72	837.17
WEST BENGAL	69.35	89.99	4.71	0.00	0.00	0.00	88.16	138.83	66.60
ODISHA	66.45	181.60	0.00	10.02	0.00	0.00	134.60	180.49	171.05
BIHAR	149.18	1.13	4.77	0.00	0.00	0.00	417.85	0.96	-569.71
JHARKHAND	0.00	4.49	0.00	3.69	0.00	0.00	90.57	4.41	-77.99
SIKKIM	0.00	1.98	1.21	0.00	0.00	0.00	6.96	1.96	-4.24
DVC	12.60	0.01	0.00	32.76	0.00	0.00	5.04	11.36	26.49
ARUNACHAL P	0.00	13.23	0.00	0.00	0.00	0.00	5.93	6.80	14.09
ASSAM	0.00	7.44	0.00	0.00	0.00	0.00	50.52	30.82	-12.26
MANIPUR	0.19	2.96	0.00	0.00	0.00	0.00	16.84	6.26	-7.81
MEGHALAYA	0.71	39.27	0.00	0.00	0.00	0.00	0.01	10.38	48.93
MIZORAM	1.24	0.00	0.00	0.00	0.00	0.00	0.00	0.00	-1.24
NAGALAND	3.14	2.91	0.00	0.00	0.00	0.00	1.77	1.29	-0.71
TRIPURA	0.02	0.98	0.00	0.00	0.00	0.00	11.48	1.67	-8.85
NTPC STATIONS-NR	16.74	0.00	0.00	0.00	0.00	0.00	49.47	0.00	-66.21
NEP	0.00	31.78	0.00	0.00	0.00	0.00	0.00	0.09	31.87
AD HYDRO	14.34	0.00	0.00	0.00	0.00	0.00	0.23	0.00	-14.57
IGSTPS	0.44	0.00	0.00	0.00	0.00	0.00	4.30	0.00	-4.74
KARCHAM WANGTOC	18.75	0.00	0.00	0.00	0.00	0.00	0.97	0.00	-19.72
SHREE CEMENT	6.38	0.00	0.00	0.00	0.00	0.00	0.39	0.00	-6.77
LANCO BUDHIL	0.66	0.00	0.00	0.00	0.00	0.00	0.20	0.00	-0.86
SORANG HEP	4.04	0.00	0.00	0.00	0.00	0.00	0.92	0.00	-4.96
SAINJ HEP	6.34	0.00	0.00	0.00	0.00	0.00	0.94	0.04	-7.25
ASEJTL_SLR	29.76	0.00	27.51	0.00	0.00	0.00	3.41	0.00	-60.69
SINGOLI BHATWARI H	4.53	0.00	5.01	0.00	0.00	0.00	2.62	0.00	-12.15
NCR ALLAHABAD	0.00	24.17	0.00	14.22	0.00	0.00	0.00	2.51	40.89
RENEW_SR_SLR	45.35	0.00	2.28	0.00	0.00	0.00	7.15	1.68	-53.10
TPSL	0.61	0.00	13.95	0.00	0.00	0.00	1.48	0.00	-16.04
AMP_GREEN6	22.56	0.00	0.00	0.00	0.00	0.00	2.82	0.00	-25.38
ONEVOLT	21.11	0.00	0.00	0.00	0.00	0.00	3.60	0.00	-24.71
GRIAN	9.57	0.00	9.31	0.00	0.00	0.00	2.36	0.00	-21.23
AMPLUS_AGES	8.36	0.00	13.40	0.00	0.00	0.00	3.25	0.00	-25.01
RENEW_SPRATAP	30.06	0.00	3.89	0.00	0.00	0.00	4.91	0.00	-38.85
RENEW_SVIHAAN	16.64	0.00	2.12	0.00	0.00	0.00	1.63	0.00	-20.40
RENEW_ROSHNI	46.40	0.00	6.53	0.00	0.00	0.00	4.88	0.00	-57.82

FATEHGARH									
ADEPT	26.63	0.00	0.00	0.00	0.00	0.00	0.96	0.00	-27.59
TESPL	1.70	0.00	12.41	0.00	0.00	0.00	4.65	0.00	-18.76
RENEW_SAAYAN	45.63	0.00	6.30	0.00	0.00	0.00	5.53	0.00	-57.46
ADANI_S_RJ2	19.98	0.00	0.01	0.00	0.00	0.00	0.14	0.00	-20.12
NTPC STATIONS-WR	3.44	0.00	0.00	0.00	0.00	0.00	36.94	1.14	-39.24
JINDAL POWER	109.71	1.03	0.00	0.00	0.00	0.00	2.59	4.48	-106.79
ACBIL	36.17	0.00	0.00	0.00	0.00	0.00	6.81	0.20	-42.79
BALCO	1.22	0.00	0.00	3.54	0.00	0.00	11.70	4.58	-4.80
DCPP	104.15	0.00	0.00	0.00	0.00	0.00	0.79	2.28	-102.65
EMCO	3.40	0.00	0.00	0.00	0.00	0.00	3.10	0.00	-6.50
KSK MAHANADI	4.35	0.00	0.00	0.00	0.00	0.00	3.65	0.00	-8.00
ESSAR POWER	230.22	0.00	0.00	0.00	0.00	0.00	16.94	29.99	-217.18
JINDAL STAGE-II	273.27	0.00	0.00	0.00	0.00	0.00	4.86	12.71	-265.42
DB POWER	186.56	0.00	0.00	0.00	0.00	0.00	2.82	0.00	-189.38
DHARIWAL POWER	26.38	0.00	0.00	0.00	0.00	0.00	0.00	0.00	-26.38
JAYPEE NIGRIE	33.52	0.00	0.00	0.00	0.00	0.00	0.09	0.00	-33.60
DGEN MEGA POWER	9.17	0.00	0.00	0.00	0.00	0.00	2.50	0.00	-11.67
MB POWER	0.08	13.90	0.00	0.00	0.00	0.00	9.85	4.86	8.83
MARUTI COAL	5.72	0.00	0.00	0.00	0.00	0.00	4.10	0.00	-9.82
JHABUA POWER_MP	2.65	0.00	0.00	0.00	0.00	0.00	5.31	0.00	-7.96
SASAN UMPP	0.00	0.00	0.00	0.00	0.00	0.00	16.64	0.00	-16.64
TRN ENERGY	11.48	0.00	0.00	0.00	0.00	0.00	18.87	0.59	-29.76
RKM POWER	35.67	0.00	0.00	0.00	0.00	0.00	16.58	0.00	-52.25
SKS POWER	4.12	6.95	0.00	0.00	0.00	0.00	0.75	41.76	43.84
INOX_BHUJ	0.01	0.00	0.54	0.00	0.00	0.00	0.00	0.00	-0.55
AMPS Hazira	0.00	33.25	0.00	63.70	0.00	0.00	0.00	17.44	114.39
RGPPL_IR	0.00	0.00	0.00	0.00	0.00	0.00	0.00	1.36	1.36
ADANI_WIND	31.88	0.00	23.94	0.00	0.00	0.00	8.25	0.00	-64.07
CONTINNUM PT	0.75	0.00	14.03	0.00	0.00	0.00	0.00	0.00	-14.78
RENERGY5_WIND	5.44	0.00	3.37	0.00	0.00	0.00	0.04	0.00	-8.85
ARTPP	328.96	0.00	0.00	0.00	0.00	0.00	8.47	11.65	-325.78
MTPS	0.00	0.00	0.00	0.00	0.00	0.00	9.42	0.00	-9.42
RAIGARH_ADANI	170.49	0.00	0.00	0.00	0.00	0.00	5.06	0.00	-175.55
NREL_DAYAPAR (W)	0.00	0.00	0.00	0.00	0.00	0.00	5.74	0.00	-5.74
KAPS 3&4 (INFIRM)	0.00	0.00	0.00	0.00	0.00	0.00	65.446	0.00	-65.446
ADANI_4RE	26.45	0.00	73.33	0.00	0.00	0.00	5.165	0.00	-104.948
ADANI_W_KUTCHH4 (INFIRM)	3.80	0.00	12.15	0.00	0.00	0.00	0.099	0.00	-16.050
ADANI GREEN_25B (INFIRM)	5.19	0.00	8.84	0.00	0.00	0.00	0.672	0.00	-14.701
ADANI GREEN_26B (INFIRM)	0.42	0.00	0.67	0.00	0.00	0.00	0.065	0.00	-1.146
NANI VIRANI_W	0.04	0.00	1.37	0.00	0.00	0.00	0.000	0.00	-1.408
ADANI GREEN_25A (INFIRM)	0.00	0.00	0.01	0.00	0.00	0.00	0.018	0.00	-0.029
ADANIRE_55 (INFIRM)	0.00	0.00	0.10	0.00	0.00	0.00	0.081	0.00	-0.183
NTPC STATIONS-SR	17.54	0.00	0.00	0.00	0.00	0.00	14.799	0.00	-32.335
SIMHAPURI	8.09	0.00	0.00	0.00	0.00	0.00	5.176	0.12	-13.148
IL&FS	1.32	0.00	0.00	0.00	0.00	0.00	3.740	0.00	-5.057
NLC	0.18	0.01	0.00	0.00	0.00	0.00	9.21	0.00	-9.38
SEMBCORP	37.12	0.00	0.00	0.00	0.00	0.00	19.48	0.00	-56.60
NETCL VALLUR	0.06	0.00	0.00	0.00	0.00	0.00	1.30	0.00	-1.37
OSTRO Hiriyyur	5.56	0.00	8.06	0.00	0.00	0.00	0.54	0.00	-14.16
JSW_RENEW_2	0.00	0.00	4.86	0.00	0.00	0.00	0.00	0.00	-4.86
RENEW_ROSHNI	2.10	0.00	4.03	0.00	0.00	0.00	1.01	0.00	-7.13
RENEW_SOJAS	6.72	0.00	15.88	0.00	0.00	0.00	11.40	0.00	-34.01
NTPC STATIONS-ER	40.61	0.00	0.00	0.00	0.00	0.00	82.84	0.00	-123.44
NPGC	26.57	0.00	0.00	0.00	0.00	0.00	42.23	0.00	-68.81

ADHUNIK POWER LTI	9.11	0.00	0.00	0.00	0.00	0.00	0.00	1.95	0.00	-11.07
CHUZACHEN HEP	0.00	0.00	0.00	0.00	0.00	0.00	0.00	0.11	0.00	-0.11
GMR KAMALANGA	0.41	0.00	0.00	0.00	0.00	0.00	0.00	0.07	0.00	-0.48
JITPL	113.89	0.00	0.00	0.00	0.00	0.00	0.00	5.26	0.00	-119.15
NEPAL(NVVN)	0.00	259.54	0.00	0.00	0.00	0.00	0.00	5.90	6.32	259.96
TASHIDENG HEP	0.00	0.00	0.00	0.00	0.00	0.00	0.00	0.00	0.00	0.00
BRBCL,NABINAGAR	0.00	0.00	0.00	0.00	0.00	0.00	0.00	0.66	0.00	-0.66
DGPCL Bhutan	0.00	291.90	0.00	0.00	0.00	0.00	0.00	0.00	15.43	307.33
KBUNL	0.44	0.00	0.00	0.00	0.00	0.00	0.00	0.00	0.00	-0.44
IBEUL	26.76	0.00	0.00	0.00	0.00	0.00	0.00	0.92	0.00	-27.68
NTPC STATIONS-NER	1.06	0.00	0.00	0.00	0.00	0.00	0.00	3.83	0.00	-4.89
NEEPCO STATIONS	0.42	0.00	0.00	0.00	0.00	0.00	0.00	13.55	0.00	-13.97
RANGANADI HEP	0.00	0.00	0.00	0.00	0.00	0.00	0.00	0.038	0.00	-0.038
DOYANG HEP	0.00	0.00	0.00	0.00	0.00	0.00	0.00	0.05	0.00	-0.05
ONGC PALATANA	0.00	0.00	0.00	0.00	0.00	0.00	0.00	0.72	0.00	-0.72
PARE HEP	0.00	0.00	0.00	0.00	0.00	0.00	0.00	0.054	0.00	-0.054

Source: NLDC

\* in case of a state, the entities which are "selling" also include generators connected to state grid and the entities which are "buying" also include open access consumers.

\*\* (-) indicates sale and (+) indicates purchase.

\*\*\* Total net includes net of transactions through various segments on power exchanges

<b>Table-29: VOLUME AND CHARGES UNDER DSM (DAY-WISE), MARCH 2024</b>				
<b>Date</b>	<b>Volume (MU)</b>	<b>All India Grid Charges (₹/kWh)</b>		
		<b>Minimum</b>	<b>Maximum</b>	<b>Average</b>
1-Mar-24	83.64	2.79	10.00	4.58
2-Mar-24	98.15	2.34	8.00	3.61
3-Mar-24	87.58	2.27	8.00	3.31
4-Mar-24	77.90	1.70	7.01	3.68
5-Mar-24	81.38	2.51	5.26	3.57
6-Mar-24	75.03	2.28	7.60	3.86
7-Mar-24	69.27	1.89	10.00	4.67
8-Mar-24	69.60	2.75	10.00	4.73
9-Mar-24	70.99	2.40	10.00	4.37
10-Mar-24	74.33	2.22	6.00	3.75
11-Mar-24	69.90	2.80	10.00	4.69
12-Mar-24	64.74	2.89	10.00	4.83
13-Mar-24	69.53	2.89	10.00	5.22
14-Mar-24	66.12	2.89	10.00	5.33
15-Mar-24	67.87	2.93	10.00	5.13
16-Mar-24	71.05	3.04	10.00	5.09
17-Mar-24	73.87	2.85	6.00	4.01
18-Mar-24	70.65	2.97	8.00	4.47
19-Mar-24	70.29	2.92	6.50	4.10
20-Mar-24	77.20	2.86	6.00	3.93
21-Mar-24	74.42	2.79	6.50	3.91
22-Mar-24	68.91	2.70	6.69	3.82
23-Mar-24	68.75	2.71	6.99	4.03
24-Mar-24	76.44	1.82	6.00	3.57
25-Mar-24	84.25	1.00	6.00	2.98
26-Mar-24	80.78	2.00	6.00	3.32
27-Mar-24	70.48	2.68	10.00	4.27
28-Mar-24	69.57	2.70	10.00	5.76
29-Mar-24	69.94	2.79	10.00	5.77
30-Mar-24	86.58	2.67	10.00	5.14
31-Mar-24	83.70	1.90	10.00	4.24
<b>Total</b>	<b>2322.93</b>	<b>1.00<sup>#</sup></b>	<b>10.00<sup>#</sup></b>	<b>4.31</b>
<i>Source: NLDC</i>				
<i># Maximum/Minimum in the month</i>				

**Table-30: VOLUME OF ELECTRICITY UNDER DRAWAL/ OVER INJECTION (EXPORTED) UNDER DSM, MARCH 2024**

Name of the Entity	Volume of Under drawal/ Over injection (MUs)	% of Volume
NTPC STATIONS-WR	121.68	4.99
MP	115.24	4.72
RAJASTHAN	103.95	4.26
NTPC STATIONS-NR	103.07	4.23
GUJARAT	91.58	3.75
UTTAR PRADESH	91.35	3.74
KARNATAKA	88.17	3.61
MAHARASHTRA	85.63	3.51
TAMIL NADU	82.78	3.39
PUNJAB	74.28	3.05
NTPC STATIONS-ER	64.17	2.63
ANDHRA PRADESH	60.32	2.47
TELANGANA	55.00	2.25
CHHATTISGARH	53.26	2.18
NTPC STATIONS-SR	51.14	2.10
NPGC	48.06	1.97
HARYANA	47.64	1.95
NHPC STATIONS	45.27	1.86
J & K	42.95	1.76
BIHAR	41.31	1.69
SASAN UMPP	37.53	1.54
RKM POWER	35.36	1.45
DELHI	30.62	1.26
DVC	29.91	1.23
HIMACHAL PRADESH	26.26	1.08
JHARKHAND	23.02	0.94
NEEPCO STATIONS	23.01	0.94
IGSTPS	20.36	0.83
NLC	20.30	0.83
ODISHA	19.65	0.81
AMPS Hazira	18.64	0.76
UTTARAKHAND	18.41	0.75
BBMB	13.72	0.56
JINDAL STAGE-II	11.88	0.49
WEST BENGAL	11.25	0.46
MANIPUR	10.80	0.44
KAPS 3&4 (INFIRM)	10.23	0.42
GIWEL BHUJ	9.52	0.39
AGEMPL BHUJ	9.37	0.38
RPREL	9.21	0.38
AYANA_NPKUNTA	9.04	0.37
AZURE43_SLR	9.04	0.37
PONDICHERRY	8.93	0.37
NEPAL(NVVN)	8.75	0.36
AVAADASN_SLR	8.60	0.35
KAPP 3&4	8.55	0.35
LANKO_AMK	8.26	0.34
JAYPEE NIGRIE	8.03	0.33
ADANI_4RE	7.78	0.32
JINDAL POWER	7.74	0.32
MEGHALAYA	7.74	0.32
ASSAM	7.61	0.31
SBESS	7.55	0.31
TRIPURA	7.24	0.30
BALCO	7.20	0.29
ASEJTL_SLR	7.20	0.29
AVADARJHN_SLR	7.08	0.29
ADANI_WIND	6.89	0.28
OSTRO	6.73	0.28

RENEW_BHUJ	6.48	0.27
SKRPL	6.48	0.27
NOKHRA_STPP	6.34	0.26
GOA	6.27	0.26
INOX_BHUJ	6.13	0.25
MAITHON POWER LTD	6.07	0.25
RENEW_BHACHAU	5.95	0.24
MB POWER	5.83	0.24
NSPCL	5.80	0.24
ESSAR POWER	5.78	0.24
ALTRA XERGI	5.70	0.23
APRAAVA	5.60	0.23
BRBCL,NABINAGAR	5.56	0.23
CHANDIGARH	5.51	0.23
RENEWURJA_SLR	5.42	0.22
MIZORAM	5.35	0.22
NJPC	5.32	0.22
ARUNACHAL PRADESH	5.24	0.21
RENEWSB	5.06	0.21
JITPL	5.05	0.21
AVAADA SUNSHINE	4.94	0.20
RENEW_ROSHNI	4.91	0.20
ALFANAR_BHUJ	4.85	0.20
AZURE_PVGD	4.83	0.20
DD&DNH	4.69	0.19
PARAM_PVGD	4.67	0.19
THARI_SLR	4.66	0.19
SPRNG_NPKUNTA	4.58	0.19
SBG_NPK	4.52	0.19
ACME_RUMS	4.50	0.18
AZURE41_SLR	4.48	0.18
KREDL_PVGD	4.47	0.18
SIKKIM	4.45	0.18
CLEAN_SLR	4.44	0.18
AHEJ2L_SOLAR	4.38	0.18
AVIKIRAN	4.37	0.18
ADANIHB_SLR	4.26	0.17
RENEW_SLR_BKN	4.20	0.17
GIWEL_TCN	4.05	0.17
NTPC_ANTP	4.00	0.16
MAHINDRA_RUMS	3.97	0.16
AZURE_MAPLE_SLR	3.97	0.16
NTPC STATIONS-NER	3.90	0.16
ARS_PVGD	3.84	0.16
ACME_HEERGARH	3.81	0.16
ARINSUM_RUMS	3.76	0.15
BANGLADESH	3.68	0.15
TEHRI	3.67	0.15
AYANA_RP1	3.62	0.15
RENEWSW_SLR	3.61	0.15
SJVN GREEN	3.55	0.15
MSUPL_BHDL2	3.55	0.15
CLEANSR_SLR	3.55	0.15
ABC_BHDL2	3.53	0.14
RENEW_SR_SLR	3.52	0.14
TATA_PVGD	3.49	0.14
RENEWJH_SLR	3.46	0.14
EDEN_SLR	3.44	0.14
KERALA	3.35	0.14
BARC	3.31	0.14
MSRPL	3.30	0.14
AHEJ4L_SOLAR	3.14	0.13
TATA_SLR	3.12	0.13

RISING_SLR	3.12	0.13
ADY1_PVGD	3.10	0.13
NETRA WIND	2.99	0.12
MTPS II	2.97	0.12
RAIL	2.90	0.12
NTPL	2.88	0.12
NAGALAND	2.88	0.12
AHEJOL_S_FTG2	2.87	0.12
RAMPUR HEP	2.82	0.12
RENEW_SPRATAP	2.76	0.11
DEVKOOT_SLR	2.75	0.11
ARERJL_SLR	2.59	0.11
SEMBCORP	2.54	0.10
NETCL VALLUR	2.47	0.10
SIMHAPURI	2.44	0.10
SKS POWER	2.43	0.10
MSEPL	2.40	0.10
TORRENT SOLARGEN	2.37	0.10
GRT_JPL	2.35	0.10
AZURE_SLR	2.33	0.10
GSECL P-II	2.19	0.09
SESP	2.19	0.09
ORANGE_TCN	2.15	0.09
GSECL_Radhnesda	2.05	0.08
CGPL	2.03	0.08
KARCHAM WANGTOO	2.02	0.08
NEP	2.02	0.08
TATA_GREEN	2.01	0.08
ESPL_RADHANESDA	1.99	0.08
OSTRO Hiriur	1.92	0.08
SPRING_PUGALUR	1.88	0.08
JSW_RENEW_2	1.86	0.08
FORTUM1_PVGD	1.85	0.08
KSK MAHANADI	1.77	0.07
DB POWER	1.76	0.07
ONGC PALATANA	1.72	0.07
ACME_SLR	1.72	0.07
AZURE34_SLR	1.71	0.07
RENEW_PVGD	1.71	0.07
IL&FS	1.68	0.07
KOTESHWAR	1.66	0.07
FRV_ANTP	1.64	0.07
DCPP	1.58	0.06
AVAADA1_PVGD	1.55	0.06
THERMAL POWERTECH	1.49	0.06
DGPCL Bhutan	1.47	0.06
EMCO	1.42	0.06
RENEW_SVIHAAN	1.31	0.05
Railways_ER ISTS	1.28	0.05
AZURE_ANTP	1.27	0.05
RANGANADI HEP	1.23	0.05
POWERICA	1.21	0.05
FORTUM2_PVGD	1.21	0.05
AMP_GREEN6	1.21	0.05
TRN ENERGY	1.17	0.05
AMPLUS_AGES	1.14	0.05
SBG_PVGD	1.08	0.04
JHABUA POWER_MP	1.04	0.04
GMR KAMALANGA	1.03	0.04
RAP C	1.00	0.04
GIPCL_RADHANESDA	0.97	0.04
NAPP	0.96	0.04
DGEN MEGA POWER	0.96	0.04

DAGACHU	0.92	0.04
RENEW_SLR	0.89	0.04
BETAM_TCN	0.87	0.04
ONEVOLT	0.87	0.04
IBEUL	0.84	0.03
TPSL	0.84	0.03
RONGNICHU HEP	0.83	0.03
RENEW_SOJAS	0.82	0.03
ADHUNIK POWER LTD	0.81	0.03
ACBIL	0.81	0.03
SAINJ HEP	0.79	0.03
POWERGRID HVDC	0.79	0.03
LOKTAK	0.78	0.03
TATA_ANTP	0.78	0.03
AHSP_ANTP	0.77	0.03
TPREL_RADHANESDA	0.75	0.03
GRIAN	0.75	0.03
ADANI_SLR 4	0.64	0.03
AVAADA2_PVGD	0.62	0.03
PARE HEP	0.62	0.03
ADANI GREEN	0.61	0.03
RANGIT HEP	0.61	0.02
YARROW_PVGD	0.58	0.02
AKS_PVGD	0.55	0.02
SINGOLI BHATWARI HEP	0.54	0.02
AKSP_ANTP	0.53	0.02
TASHIDENG HEP	0.52	0.02
RAP B	0.51	0.02
CHUZACHEN HEP	0.45	0.02
RGPPL	0.43	0.02
ABSP_ANTP	0.43	0.02
LANCO BUDHIL	0.39	0.02
FRV_NPK	0.36	0.01
AGEL_PSS 3	0.35	0.01
SHREE CEMENT	0.34	0.01
SRSSFPL	0.30	0.01
RSTPS_FSPP	0.30	0.01
BEEMPOW	0.28	0.01
DOYANG HEP	0.25	0.01
COASTGEN	0.23	0.01
SORANG HEP	0.23	0.01
AD HYDRO	0.21	0.01
NFF	0.12	0.005
DHARIWAL POWER	0.10	0.004
MYTRAH_TCN	0.07	0.003
HVDC ALPD	0.03	0.001
HVDC PUS	0.002	0.0001
KHURJA STPP	0.0001	0.000005
<b>Total</b>	<b>2439.39</b>	<b>100.00</b>
<b>Volume Exported by top 5 Regional Entities</b>	<b>535.51</b>	<b>21.95</b>



**Table-31: VOLUME OF ELECTRICITY OVER DRAWAL/ UNDER INJECTION (IMPORTED) UNDER DSM, MARCH 2024**

Name of the Entity	Volume of Over drawal/ Under Injection (MUs)	% of Volume
NTPC STATIONS-ER	114.19	5.18
NTPC STATIONS-NR	100.42	4.55
ADANIHB_SLR	96.81	4.39
NTPC STATIONS-WR	93.30	4.23
NTPC STATIONS-SR	89.05	4.04
UTTAR PRADESH	78.64	3.56
RAJASTHAN	63.49	2.88
MAHARASHTRA	60.44	2.74
GUJARAT	57.75	2.62
WEST BENGAL	53.65	2.43
KARNATAKA	48.70	2.21
ODISHA	45.89	2.08
TAMIL NADU	43.43	1.97
HARYANA	42.71	1.94
PUNJAB	35.96	1.63
KERALA	35.28	1.60
BIHAR	34.80	1.58
ANDHRA PRADESH	33.79	1.53
TELANGANA	30.44	1.38
GIWEL_BHUJ	26.75	1.21
AGEMPL_BHUJ	26.57	1.20
MP	24.65	1.12
NLC	24.42	1.11
CHHATTISGARH	23.38	1.06
AMPS Hazira	22.71	1.03
JHARKHAND	22.36	1.01
UTTARAKHAND	22.16	1.00
J & K	21.89	0.99
DVC	21.87	0.99
AYANA_NPKUNTA	21.36	0.97
PARAM_PVGD	20.26	0.92
CGPL	19.77	0.90
ADANI_WIND	18.72	0.85
IBEUL	17.90	0.81
ASSAM	17.56	0.80
SBESS	17.01	0.77
OSTRO	15.53	0.70
RENEW_BHACHAU	15.33	0.69
RENEW_ROSHNI	15.26	0.69
RENEW_BHUJ	15.22	0.69
ALFANAR_BHUJ	13.54	0.61
GRT_JPL	13.35	0.61
KREDL_PVGD	13.07	0.59
INOX_BHUJ	12.74	0.58
FORTUM1_PVGD	12.73	0.58
SKRPL	12.33	0.56
ADANI_4RE	11.41	0.52
SPRING_PUGALUR	11.29	0.51
KAPP 3&4	11.14	0.50
NHPC STATIONS	11.02	0.50
OSTRO Hiriur	10.48	0.47
HIMACHAL PRADESH	10.44	0.47
IGSTPS	10.15	0.46
DGPCL Bhutan	10.01	0.45
ESSAR POWER	9.72	0.44
RAP C	9.68	0.44
BALCO	8.84	0.40
RAP B	8.80	0.40
KAPS 3&4 (INFIRM)	8.72	0.40

BRBCL,NABINAGAR	8.54	0.39
NPGC	8.01	0.36
MB POWER	7.91	0.36
GOA	7.87	0.36
APRAAVA	7.33	0.33
SHREE CEMENT	7.33	0.33
NTPC STATIONS-NER	7.21	0.33
AVAADASN_SLR	7.15	0.32
BANGLADESH	7.07	0.32
ACME_SLR	6.87	0.31
AVADARJHN_SLR	6.74	0.31
TRIPURA	6.67	0.30
AVIKIRAN	6.59	0.30
NETRA WIND	6.56	0.30
SESPL	6.08	0.28
DELHI	6.04	0.27
RAIL	6.00	0.27
TORRENT SOLARGEN	5.95	0.27
NETCL VALLUR	5.86	0.27
AYANA_RP1	5.77	0.26
AZURE43_SLR	5.62	0.25
ARUNACHAL PRADESH	5.58	0.25
RENEW_SOJAS	5.40	0.24
DD&DNH	5.36	0.24
THERMAL POWERTECH	5.23	0.24
JINDAL STAGE-II	5.22	0.24
CHANDIGARH	5.15	0.23
JSW_RENEW_2	4.81	0.22
JITPL	4.55	0.21
CLEAN_SLR	4.48	0.20
NEPAL(NVVN)	4.41	0.20
AHEJOL_S_FTG2	3.81	0.17
ASEJTL_SLR	3.77	0.17
RENEW_SR_SLR	3.67	0.17
COASTGEN	3.50	0.16
RPREL	3.46	0.16
ACME_HEERGARH	3.42	0.16
DB POWER	3.41	0.15
MSEPL	3.41	0.15
SIKKIM	3.38	0.15
ALTRA XERGI	3.37	0.15
AHEJ2L_SOLAR	3.32	0.15
ABC_BHDL2	3.27	0.15
KHURJA STPP	3.20	0.14
NEEPCO STATIONS	3.11	0.14
TATA_SLR	3.09	0.14
GRIAN	2.96	0.13
DEVKOOT_SLR	2.95	0.13
RENEWSW_SLR	2.95	0.13
NTPL	2.92	0.13
AZURE41_SLR	2.90	0.13
RENEWJH_SLR	2.89	0.13
NTPC_ANTP	2.88	0.13
THAR1_SLR	2.84	0.13
EDEN_SLR	2.83	0.13
RENEW_SLR_BKN	2.76	0.13
NEP	2.75	0.12
RAPP 7&8	2.63	0.12
MTPS II	2.60	0.12
CLEANSPL_SLR	2.58	0.12
TATA_PVGD	2.56	0.12
NOKHRA_STPP	2.56	0.12
RENEWSB	2.55	0.12

RENEWURJA_SLR	2.53	0.11
JINDAL POWER	2.53	0.11
ARS_PVGD	2.51	0.11
TEHRI	2.48	0.11
ONEVOLT	2.34	0.11
ACBIL	2.31	0.10
AZURE_MAPLE_SLR	2.29	0.10
MAHINDRA_RUMS	2.28	0.10
MSRPL	2.27	0.10
ADHUNIK POWER LTD	2.24	0.10
TATA_GREEN	2.24	0.10
ARINSUM_RUMS	2.23	0.10
NSPCL	2.23	0.10
JHABUA POWER_MP	2.23	0.10
KSK MAHANADI	2.21	0.10
MSUPL_BHDL2	2.21	0.10
AMPLUS_AGES	2.18	0.10
NAPP	2.18	0.10
AZURE_SLR	2.18	0.10
POWERICA	2.09	0.09
ACME_RUMS	2.07	0.09
SASAN UMPP	2.05	0.09
AMP_GREEN6	2.04	0.09
ARERJL_SLR	2.04	0.09
ADY1_PVGD	1.90	0.09
RENEW_SPRATAP	1.87	0.08
AHEJ4L_SOLAR	1.77	0.08
ESPL_RADHANESDA	1.74	0.08
RISING_SLR	1.73	0.08
EMCO	1.70	0.08
MAITHON POWER LTD	1.58	0.07
RENEW_PVGD	1.56	0.07
GMR KAMALANGA	1.55	0.07
JAYPEE NIGRIE	1.50	0.07
PONDICHERRY	1.50	0.07
KARCHAM WANGTOO	1.40	0.06
TPSL	1.39	0.06
AZURE_PVGD	1.38	0.06
ORANGE_TCN	1.38	0.06
SKS POWER	1.37	0.06
Railways_ER ISTS	1.33	0.06
SBG_PVGD	1.22	0.06
SEMBCORP	1.22	0.06
AVAADA1_PVGD	1.11	0.05
MYTRAH_TCN	1.10	0.05
DHARIWAL POWER	1.07	0.05
SBG_NPK	1.07	0.05
AZURE34_SLR	1.05	0.05
FRV_ANTP	1.04	0.05
RANGANADI HEP	1.02	0.05
SPRNG_NPKUNTA	1.02	0.05
BBMB	1.00	0.05
TRN ENERGY	1.00	0.05
MEENAKSHI	0.92	0.04
RENEW_SVIHAAN	0.91	0.04
TPREL_RADHANESDA	0.89	0.04
GIWEL_TCN	0.88	0.04
ADANI GREEN	0.87	0.04
MEGHALAYA	0.87	0.04
RGPPL	0.86	0.04
AZURE_ANTP	0.76	0.03
RENEW_SLR	0.74	0.03
RKM POWER	0.73	0.03

GIPCL_RADHANESDA	0.73	0.03
KOTESHWAR	0.71	0.03
NJPC	0.67	0.03
LANKO KONDAPALLI	0.66	0.03
MIZORAM	0.65	0.03
RSTPS_FSPP	0.61	0.03
FORTUM2_PVGD	0.61	0.03
SRSSFPL	0.61	0.03
ABSP_ANTP	0.52	0.02
NAGALAND	0.51	0.02
BETAM_TCN	0.48	0.02
TATA_ANTP	0.47	0.02
FRV_NPK	0.44	0.02
ADANI_SLR 4	0.42	0.02
AKS_PVGD	0.42	0.02
YARROW_PVGD	0.41	0.02
PARE HEP	0.40	0.02
DCPP	0.33	0.01
AVAADA2_PVGD	0.32	0.01
GSECL_Radhanesda	0.32	0.01
AKSP_ANTP	0.30	0.01
GSECL P-II	0.28	0.01
SAINJ HEP	0.28	0.01
MANIPUR	0.28	0.01
AHSP_ANTP	0.27	0.01
SIMHAPURI	0.22	0.01
DGEN MEGA POWER	0.22	0.01
DOYANG HEP	0.22	0.01
LOKTAK	0.17	0.01
IL&FS	0.15	0.01
RANGIT HEP	0.13	0.006
HVDC PUS	0.13	0.006
CHUZACHEN HEP	0.12	0.006
AD HYDRO	0.11	0.005
RAMPUR HEP	0.11	0.005
SINGOLI BHATWARI HEP	0.09	0.004
TASHIDENG HEP	0.08	0.004
SORANG HEP	0.08	0.004
AGEL PSS 3	0.07	0.003
LANCO BUDHIL	0.06	0.003
DAGACHU	0.06	0.003
RONGNICHU HEP	0.05	0.002
LANKO_AMK	0.05	0.002
HVDC ALPD	0.05	0.002
SJVN GREEN	0.04	0.002
NFF	0.03	0.001
AVAADA SUNSHINE	0.02	0.001
JORETHANG	0.02	0.001
BEEMPOW	0.005	0.0002
BARC	0.004	0.0002
ONGC PALATANA	0.002	0.0001
POWERGRID HVDC	0.0002	0.00001
<b>TOTAL</b>	<b>2206.47</b>	<b>100.00</b>
<b>Volume Imported by top 5 Regional Entities</b>	<b>493.77</b>	<b>22.38</b>

**Table-32: VOLUME AND PRICE OF RENEWABLE ENERGY CERTIFICATES (RECs) TRANSACTED THROUGH POWER EXCHANGES AND THROUGH TRADERS (BILATERAL), MARCH 2024**

Sr. No	Details of REC Transactions	Through Power Exchange			Bilateral through Traders
		IEX	PXIL	HPX	
1	Volume of Buy Bid	1115755	610057	80000	-
2	Volume of Sell Bid	24292003	15865234	5039949	-
3	Ratio of Buy Bid to Sell Bid Volume	0.05	0.04	0.02	-
4	Traded Volume (MWh)	1113755	599057	80000	143757
5	Weighted Average Price (₹/MWh)	289.64	283.72	280.00	318.38

Source: Power Exchanges & Grid-India REC Report

Note: 1 REC = 1 MWh

Under the CERC REC Regulations 2022, the categorization of RECs has been dispensed with and exchange of RECs through trading licensees has also been allowed

**Table-33(a): VOLUME AND PRICE OF CROSS BORDER TRADE THROUGH DAY AHEAD MARKET AT IEX, MARCH 2024**

Sr. No.	Neighbouring Country	Volume (MU)			Weighted Average Price (₹/kWh)	
		Sale	Purchase	Net*	Sale	Purchase
1	Nepal	0.00	291.32	291.32	-	3.78
2	Bhutan	0.00	291.90	291.90	-	3.63
	<b>Total</b>	<b>0.00</b>	<b>583.22</b>	<b>583.22</b>	-	-

Source: IEX

\* Net indicates difference of volume purchased and sold by the respective neighbouring country

Note: No Cross Border transactions were recorded in DAM at PXIL and HPX

**Table-33(b): VOLUME AND PRICE OF CROSS BORDER TRADE THROUGH REAL TIME MARKET AT IEX, MARCH 2024**

Sr. No.	Neighbouring Country	Volume (MU)			Weighted Average Price (₹/kWh)	
		Sale	Purchase	Net*	Sale	Purchase
1	Nepal	5.90	6.41	0.51	3.02	3.76
2	Bhutan	0.00	15.43	15.43	-	4.58
	<b>Total</b>	<b>5.90</b>	<b>21.85</b>	<b>15.94</b>	-	-

Source: IEX

\* Net indicates difference of volume purchased and sold by the respective neighbouring country

Note: No Cross Border transactions were recorded in RTM at PXIL and HPX



**Economics Division**  
**Central Electricity Regulatory Commission**  
6th, 7th & 8th Floors, Tower B, World Trade Centre  
Nauroji Nagar, New Delhi- 110029